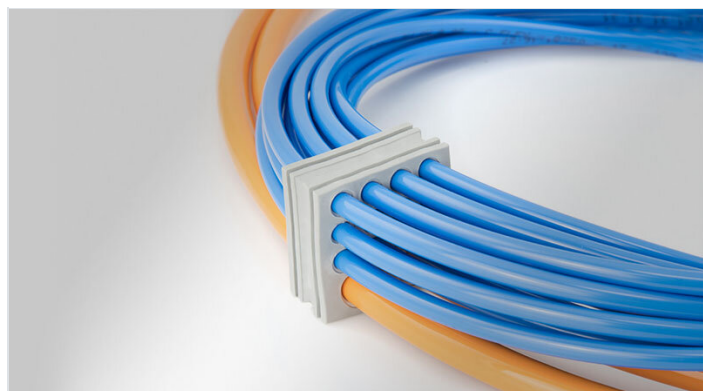


# KT-DT multi-membrane cable grommets

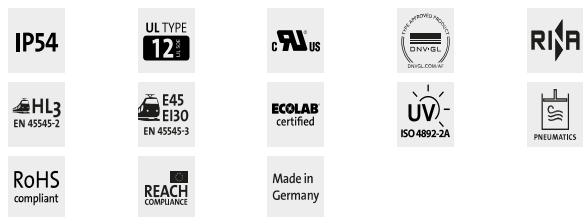
for cable diameters 1 - 14.5 mm / IP54 / UL Type 12



The KT-DT cable grommets can be used anywhere where a large number of electrical, pneumatic or hydraulic lines must be routed and sealed with IP54. By using the KT-DT grommets, the cable density can be significantly increased.

KT-DT grommets are compatible with split icotek cable entry frames, such as KEL-U, KEL and KEL-FG. The routing of cables with and without preassembled connectors in one cable entry frame can thus be easily combined.

The KT-DT grommets are also perfectly suitable for the assembly of subsequently terminated cable harnesses.



## Specifications

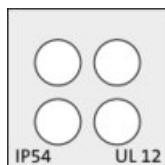
IP rating (EN 60529)	IP54
UL Type (UL 50E)	UL Type 12
Material	Elastomer
Flame class	UL94-V0, self-extinguishing
Operating temperature	-40 C° to 100 C°
Properties	silicone free, halogen free

## Advantages & benefits

- Enable routing of pre-terminated cables through cable entry frames and split cable glands
- High cable density
- Enables sub-assembly of cable harnesses

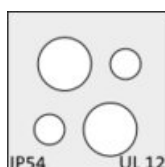
## Product types & sizes

### KT-DT 7



Part No.	41550	Height	14 mm
EAN	4251269319204	Mounting height	2 mm
PU	10	For cable type	Rundleitung
For max. no. of cables	4	Clamping range	4 x 1 - 6 mm
Colour	grau (ähnlich RAL 7035)		
Length	21 mm		
Width	21 mm		

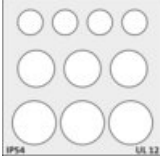
### KT-DT 8

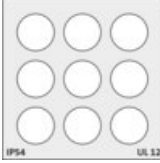


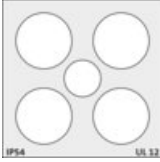
Part No.	41552	Height	19 mm
EAN	4251269319211	Mounting height	2 mm
PU	10	For cable type	Rundleitung
For max. no. of cables	4	Clamping range	2 x 1 - 7 mm
Colour	grau (ähnlich RAL 7035)		2 x 1 - 4 mm
Length	21 mm		
Width	21 mm		

<b>KT-DT 1</b> 	Part No.	<b>41500</b>	Height	<b>19 mm</b>
	EAN	<b>4251269307287</b>	Mounting height	<b>2 mm</b>
	PU	<b>10</b>	For cable type	<b>Rundleitung</b>
	For max. no. of cables	<b>14</b>	Clamping range	<b>12 x 1 - 6.5 mm</b>
	Colour	<b>grau (ähnlich RAL 7035)</b>		<b>2 x 1 - 12.2 mm</b>
	Length	<b>41,5 mm</b>		
	Width	<b>40,5 mm</b>		

<b>KT-DT 2</b> 	Part No.	<b>41510</b>	Height	<b>19 mm</b>
	EAN	<b>4251269307294</b>	Mounting height	<b>2 mm</b>
	PU	<b>10</b>	For cable type	<b>Rundleitung</b>
	For max. no. of cables	<b>16</b>	Clamping range	<b>16 x 1 - 7.1 mm</b>
	Colour	<b>grau (ähnlich RAL 7035)</b>		
	Length	<b>41,5 mm</b>		
	Width	<b>40,5 mm</b>		

<b>KT-DT 3</b> 	Part No.	<b>41520</b>	Height	<b>19 mm</b>
	EAN	<b>4251269307300</b>	Mounting height	<b>2 mm</b>
	PU	<b>10</b>	For cable type	<b>Rundleitung</b>
	For max. no. of cables	<b>10</b>	Clamping range	<b>4 x 1 - 6.5 mm</b>
	Colour	<b>grau (ähnlich RAL 7035)</b>		<b>3 x 1 - 9.5 mm</b>
	Length	<b>41,5 mm</b>		<b>3 x 1 - 11.3 mm</b>
	Width	<b>40,5 mm</b>		

<b>KT-DT 4</b> 	Part No.	<b>41530</b>	Height	<b>19 mm</b>
	EAN	<b>4251269307317</b>	Mounting height	<b>2 mm</b>
	PU	<b>10</b>	For cable type	<b>Rundleitung</b>
	For max. no. of cables	<b>9</b>	Clamping range	<b>9 x 1 - 9.5 mm</b>
	Colour	<b>grau (ähnlich RAL 7035)</b>		
	Length	<b>41,5 mm</b>		
	Width	<b>40,5 mm</b>		

<b>KT-DT 5</b> 	Part No.	<b>41540</b>	Height	<b>19 mm</b>
	EAN	<b>4251269319099</b>	Mounting height	<b>2 mm</b>
	PU	<b>10</b>	For cable type	<b>Rundleitung</b>
	For max. no. of cables	<b>5</b>	Clamping range	<b>4 x 1 - 14.5 mm</b>
	Colour	<b>grau (ähnlich RAL 7035)</b>		<b>1 x 1 - 9.5 mm</b>
	Length	<b>41,5 mm</b>		
	Width	<b>40,5 mm</b>		