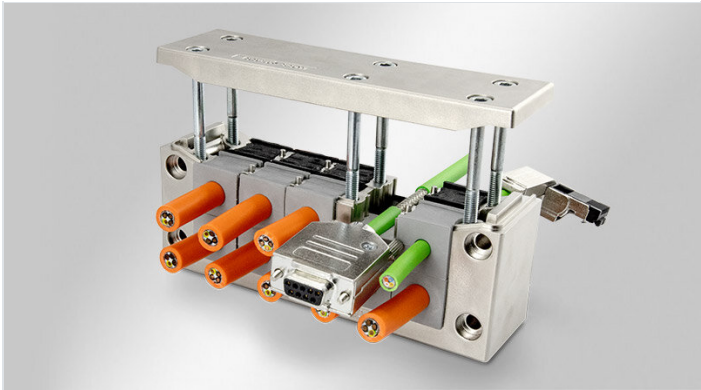


EMC-KEL-DS | Split EMC cable entry frames

for shielding cables with connectors / IP55



The EMC cable entry frame EMC-KEL-DS has been metallised (galvanise coated) to create a conductive surface.

The front cable grommet (KT) is used for strain relief and cable sealing on the cable jacket. The cable shield is contacted over 360° via the rear conductive grommet (EMC-KT).

The EMC-KEL-DS frames match exactly the cut-out dimensions for 24-pin standard industrial connectors. Either a cut-out of 36 mm or 46 mm in height can be chosen depending on the cables being routed.

The contact between the EMC-KEL-DS and the conductive housing wall is realised via the included conductive flat gasket.

IP54

IP55



RoHS
compliant



Made in
Germany

Specifications

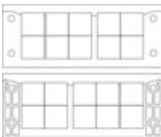
IP rating (EN 60529)	IP54, IP55
Material	Polyamide, highly conductive coating
Flame class	UL94-HB
Operating temperature	-40 C° to 140 C°
Mounting options	Screw type mounting

Advantages & benefits

- Both conducted and field-bound disturbances can be reliably diverted
- Strain relief and sealing are separated from the EMC contact
- Scratch-resistant surface
- Contacting the cable shield over 360°
- EMC grommets made entirely from conductive elastomer
- Very good dissipation values
- Very good shielding effect with regard to EMC tightness

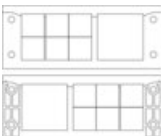
Product types & sizes

EMC-KEL-DS 24|10

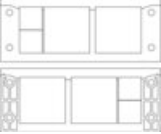



Part No.	99410	Height	40 mm
EAN	4251269322679	Mounting height	40 mm
PU	1	Cut-out size	112 x 36 mm
For max. no. of cables	10	No. of screw holes	4
Max. cable diameter	17 mm	Diam. of screw holes	5,8 mm
Length	147 mm	Screw material	Stahl, galvanisch verzinkt
Width	58 mm	Suitable for grommets	10 x EMC-KT small 10 x KT small

EMC-KEL-DS 24|7



Part No.	99411	Height	40 mm
EAN	4251269322686	Mounting height	40 mm
PU	1	Cut-out size	112 x 36 mm
For max. no. of cables	7	No. of screw holes	4
Max. cable diameter	35 mm	Diam. of screw holes	5,8 mm
Length	147 mm	Screw material	Stahl, galvanisch verzinkt
Width	58 mm	Suitable for grommets	6 x EMC-KT small 1 x EMC-KT large

EMC-KEL-DS 24 4 	Part No.	99412	Height	40 mm
	EAN	4251269322693	Mounting height	40 mm
	PU	1	Cut-out size	112 x 36 mm
	For max. no. of cables	4	No. of screw holes	4
	Max. cable diameter	35 mm	Diam. of screw holes	5,8 mm
	Length	147 mm	Screw material	Stahl, galvanisch verzinkt
	Width	58 mm	Suitable for grommets	2 x EMC-KT small
				2 x EMC-KT large

EMC gasket 24 	Part No.	99550	Mounting height	2,5 mm
	EAN		Cut-out size	112 x 36 mm
	PU	1	No. of screw holes	4
	Max. cable diameter	35 mm	Diam. of screw holes	6 mm
	Length	145 mm	Screw material	Stahl, galvanisch verzinkt
	Width	56 mm		
	Height	2,5 mm		