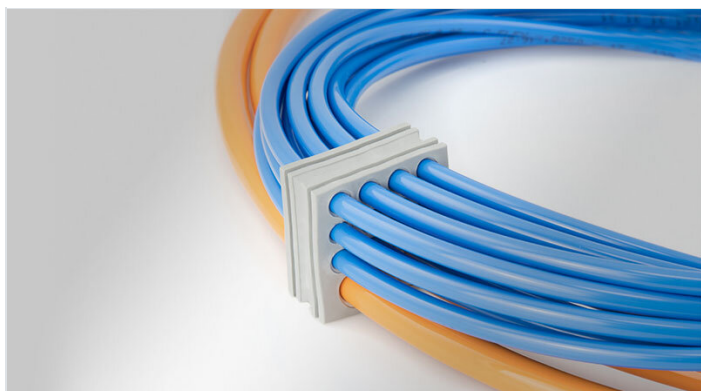


KT-DT multi-membrane cable grommets

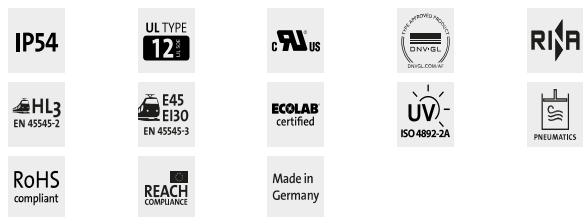
for cable diameters 1 - 14.5 mm / IP54 / UL Type 12



The KT-DT cable grommets can be used anywhere where a large number of electrical, pneumatic or hydraulic lines must be routed and sealed with IP54. By using the KT-DT grommets, the cable density can be significantly increased.

KT-DT grommets are compatible with split icotek cable entry frames, such as KEL-U, KEL and KEL-FG. The routing of cables with and without preassembled connectors in one cable entry frame can thus be easily combined.

The KT-DT grommets are also perfectly suitable for the assembly of subsequently terminated cable harnesses.



Specifications

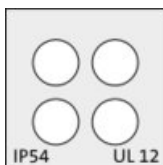
IP rating (EN 60529)	IP54
UL Type (UL 50E)	UL Type 12
Material	Elastomer
Flame class	UL94-V0, self-extinguishing
Operating temperature	-40 C° to 100 C°
Properties	silicone free, halogen free

Advantages & Benefits

- Enable routing of pre-terminated cables through cable entry frames and split cable glands
- High cable density
- Enables sub-assembly of cable harnesses

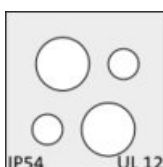
Product types & Sizes

KT-DT 7



Part No.	41550	Height	14 mm
EAN	4251269319204	Mounting height	2 mm
PU	10	For cable type	Rundleitung
For max. no. of cables	4	Clamping range	4 x 1 - 6 mm
Color	grau (ähnlich RAL 7035)		
Length	21 mm		
Width	21 mm		

KT-DT 8

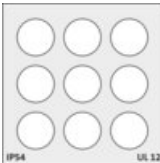


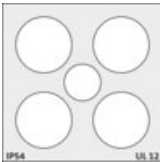
Part No.	41552	Height	19 mm
EAN	4251269319211	Mounting height	2 mm
PU	10	For cable type	Rundleitung
For max. no. of cables	4	Clamping range	2 x 1 - 7 mm
Color	grau (ähnlich RAL 7035)		2 x 1 - 4 mm
Length	21 mm		
Width	21 mm		

	Part No.	41500	Height	19 mm
	EAN	4251269307287	Mounting height	2 mm
	PU	10	For cable type	Rundleitung
	For max. no. of cables	14	Clamping range	12 x 1 - 6.5 mm
	Color	grau (ähnlich RAL 7035)		2 x 1 - 12.2 mm
	Length	41,5 mm		
	Width	40,5 mm		

	Part No.	41510	Height	19 mm
	EAN	4251269307294	Mounting height	2 mm
	PU	10	For cable type	Rundleitung
	For max. no. of cables	16	Clamping range	16 x 1 - 7.1 mm
	Color	grau (ähnlich RAL 7035)		
	Length	41,5 mm		
	Width	40,5 mm		

	Part No.	41520	Height	19 mm
	EAN	4251269307300	Mounting height	2 mm
	PU	10	For cable type	Rundleitung
	For max. no. of cables	10	Clamping range	4 x 1 - 6.5 mm
	Color	grau (ähnlich RAL 7035)		3 x 1 - 9.5 mm
	Length	41,5 mm		3 x 1 - 11.3 mm
	Width	40,5 mm		

	Part No.	41530	Height	19 mm
	EAN	4251269307317	Mounting height	2 mm
	PU	10	For cable type	Rundleitung
	For max. no. of cables	9	Clamping range	9 x 1 - 9.5 mm
	Color	grau (ähnlich RAL 7035)		
	Length	41,5 mm		
	Width	40,5 mm		

	Part No.	41540	Height	19 mm
	EAN	4251269319099	Mounting height	2 mm
	PU	10	For cable type	Rundleitung
	For max. no. of cables	5	Clamping range	4 x 1 - 14.5 mm
	Color	grau (ähnlich RAL 7035)		1 x 1 - 9.5 mm
	Length	41,5 mm		
	Width	40,5 mm		