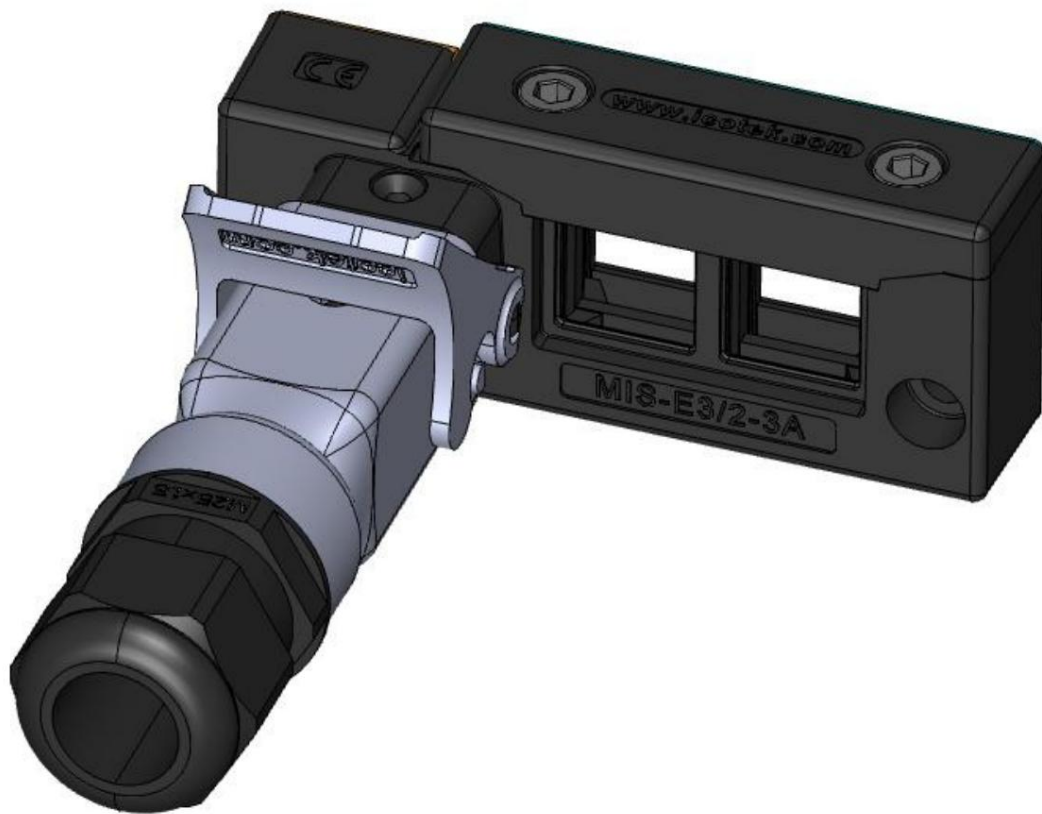




## COMPONENT RELEASE PLUG - SOCKET

---

Overview of all tested and approved components which may be used for the assembly connectors including cable entry (MIS) without invalidating the CE marking issued by the manufacturer.



**Save for future use!**

icotek GmbH & Co KG  
Bishop von Lipp Street 1  
D-73569 Eschach

phone	+49-(0)7175 / 92380-0
fax	+49-(0)7175 / 92380-50
e-mail	info@icotek.com
Internet	www.icotek.com

Product:	Connectors including cable glands
Product number:	See nameplate
Year of construction:	2024

version of the	02
Original operating & Assembly instructions:	
Issue date of the	January 27, 2025
Original operating & Assembly instructions:	

Revisions to the document

Date	version	Changes
January 27, 2025	01	First draft
January 27, 2025	02	Final standings
January 23, 2026	03	New entries added to list

Permits

This document requires the following approvals:

name	title
Florian Ocker	Head of Technology
Michael Bär	Technical Project Manager



Contents

Contents.....3 1.1.1 Component Release

Plug / Socket.....4

### 1.1.1 Component release plug / socket

Alternative components can be used without losing the CE marking (see document "Component Approval Plug – Socket" (latest version always available at [icotek.com](http://icotek.com))). The CE marking becomes invalid for all other components. If additional components are to be included in the CE marking, they must be tested and approved by icotek GmbH & Co. KG.

Manufacturer	Type designation
<b>Harting</b>	
	Han-A 09200032611
	Han-A 09200032711
	Han-A 09452001560
	Han-A 09451251560
	HAN 7D-BU-C 09 21 007 3131 F
	HAN 7D-STI-C 09 21 007 3031 M
<b>Ilme</b>	
	CKM 03
	CKF 03
<b>Phoenix</b>	
	1585252
	1585265
<b>TE Connectivity</b>	
	T2010032101-000
	T2010032201-000
<b>Weidmüller</b>	
	1498100000
	1498200000
	1498400000
	1498300000
<b>Lapp</b>	
	HA 3 SS 10420000
	HA 3 BS 10421000
<b>Amphenol</b>	

	C146 10A003 002 4
	C146 10B003 002 4
Molex	
	7203.6101.0
	7203.6001.0
RS Pro	
	1715720
	1715721