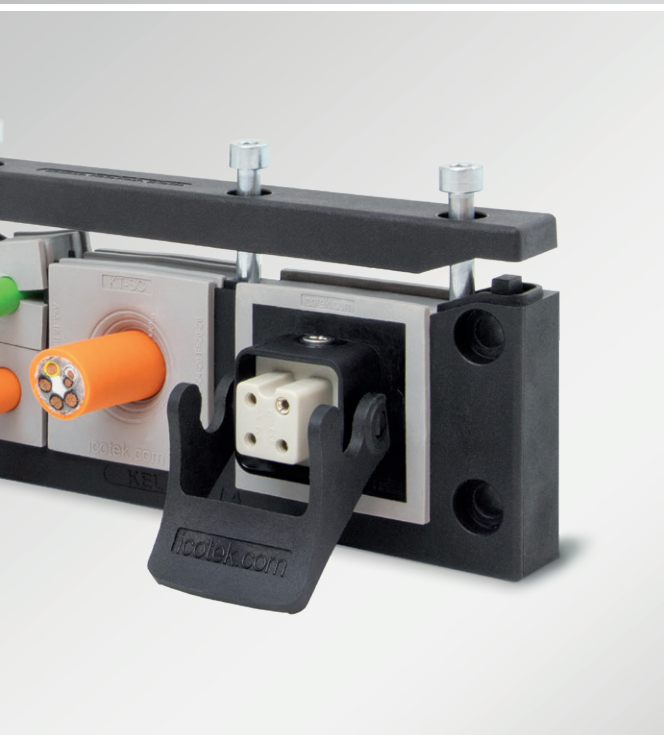


Product innovations September 2025

New products and product extensions



The innovative pioneers of smart cable management

Expertise in a wide range
of industries



Automation | Robotics



Control Panel Construction



Pneumatics



Automotive Engineering | eMobility



Food Processing and Packaging



Railway Technology



Cleanroom Technology



Mechanical Engineering



Renewable Energies



Defence | Security



We have been successfully developing innovative systems for cable entry and EMC cable shielding for almost 30 years. Leading global manufacturers from various industries rely on our expertise and innovative strength. Numerous patents and certifications are both an incentive and an aspiration for us.

News from the icotek product world – find out all about our latest product innovations here.

KEL-DPZ-FL21

4 – 5



Cable entry plate
for FL21 cut-out



KEL-DPU-OD

6 – 7



Cable entry plates
for extreme conditions



IMAS-CONNECT AT-HA

8

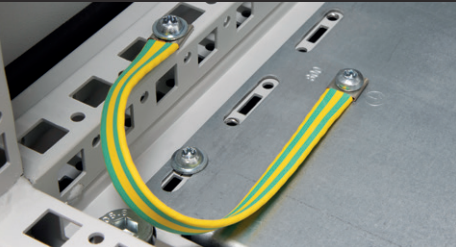


Adapter grommet, large
for industrial connectors 3A or 4A



MB

9



Earthing tape green/yellow

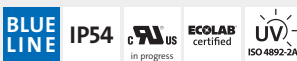


KT-BL

10



Split cable grommets for KEL-ER-BL
for the food industry, in signal color blue,
small and multi



ST 4,5

11



Plug for QT cable grommet



KEL-DPZ-FL21

Cable entry plate

for FL21 cut-out

Available
November
2025

The new cable entry has been specially developed for the standard FL21 cut-out and enables cables without connectors to be routed safely and quickly.

User benefits

- Suitable for a wide range of cable diameters
- High tightness for maximum operational safety
- High strain relief for a long service life
- Quick and easy installation saves time and costs
- Space-saving: route up to 36 cables with just one cut-out

Reliable protection thanks to double sealing

The cable entry offers a reliable protection of IP65 and is therefore ideal for use in demanding industrial environments. The secure hold of the cables ensures fewer failures and a longer service life.

One product for many applications

Depending on the version, up to 25 or 36 cables can be routed with just one cut-out. The flexible configurations allow a wide range of cable diameters to be fed through, ensuring maximum versatility, time and cost savings.

Quick and easy installation

with rivets or screws reduces labour and costs and minimises downtime.

Typical areas of application

are terminal boxes, control cabinets and other enclosure solutions where reliable and space-saving cable routing is required.

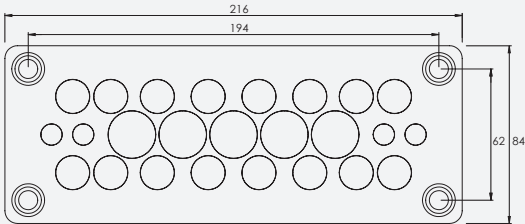
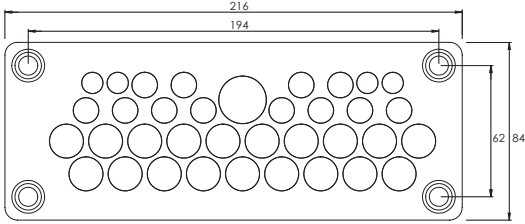
Available in grey and black, the cable entry blends seamlessly into different application environments.

Features

- Double sealing on the cable thanks to special moulding on the back of the membrane
- Suitable for standard FL21 cut-out
- Can be mounted with screws or rivets as required (Screws are not included in the scope of delivery. Rivets can be ordered as an option.)

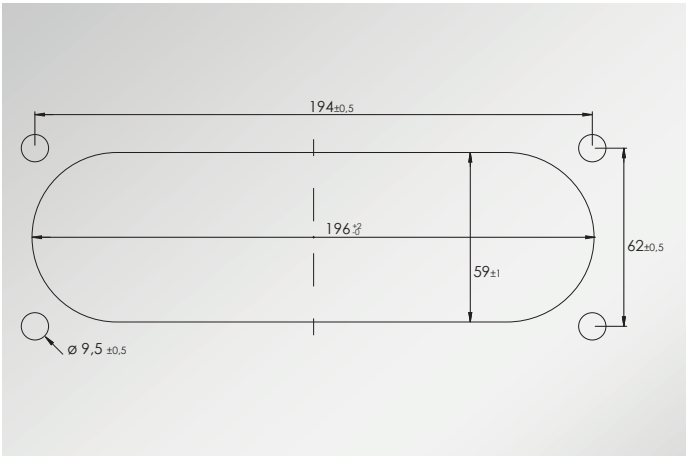


Specifications	
Material	Frame: Stainless steel V2A Membrane: Elastomer
Colour	■ grey (similar RAL 7035) ■ black (similar RAL 9005)
Flame class	UL 94 V-0, self-extinguishing
IP rating	IP54 with rivets IP65 with screws
Temperature	-40°C to +100°C (static)
Properties	Halogen free, silicone free
Cut-out	FL21 standard cut-out
Height	18 mm

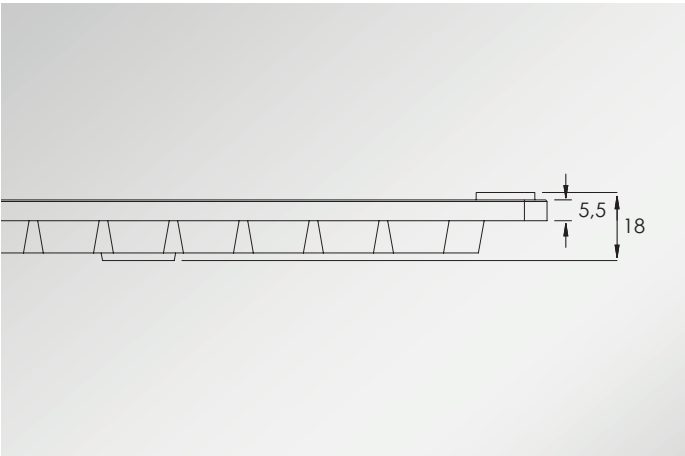
Description	Type	Cut-out	Number of cables	Order No.	PU
	KEL-DPZ-FL21 25	FL21	4 x \varnothing 5 – 10,2 mm 16 x \varnothing 9 – 16,2 mm 5 x \varnothing 16 – 22 mm	<div><div>■ 55550</div><div>■ 55560</div></div>	5
	KEL-DPZ-FL21 36	FL21	4 x \varnothing 5 – 10,2 mm 19 x \varnothing 9 – 16,2 mm 1 x \varnothing 16 – 22 mm 12 x \varnothing 7,2 – 12 mm	<div><div>■ 55551</div><div>■ 55561</div></div>	5

Rivet sets

Type	Number of rivets in a set	Colour	Material	Order No.	PU
Rivet set grey	4	<div><div>■ grey</div></div>	Rivets: Polypropylen Seal: NBR	43690	1
Rivet set black	4	<div><div>■ black</div></div>	Rivets: Polypropylen Seal: NBR	43691	1



Cut-out FL21



KEL-DPU-OD

Cable entry plates

for extreme conditions

Maximum resistance for extreme conditions! The new KEL-DPU-OD series has been specially developed for applications where extreme environmental conditions are part of everyday life.

User benefits

- High stability, vibration-proof
- Very simple assembly and installation
- High packing density for reliable and space-saving cable routing
- High strain relief for a long service life

The KEL-DPU-OD is ideally suited for applications in which cable entries are permanently exposed to strong UV radiation, weathering and temperature fluctuations. Compared to standard versions, it offers increased material resistance and extended service life in outdoor environments. Thanks to its approvals, it is particularly suitable for the use in photovoltaic systems (UL 6703, UL 6703A, UL 3703, UL 1703).

The KEL-DPU-OD enables many cables with diameters ranging from 3.2 to 20.5 mm to be routed and dual-sealed with IP66/IP68* protection in a very small space. Size 24 fits into standardised 24-pin heavy-duty connector cut-outs (36 x 112 mm).

Reliable protection in extreme climatic environments

Maximum protection against weather conditions such as rain, snow, UV radiation, dust and extreme temperatures.

F1 listing (UV and weather resistance according to UL 746C)

The long-term durability means an increased service life without embrittlement or material fatigue.

Quick and easy installation

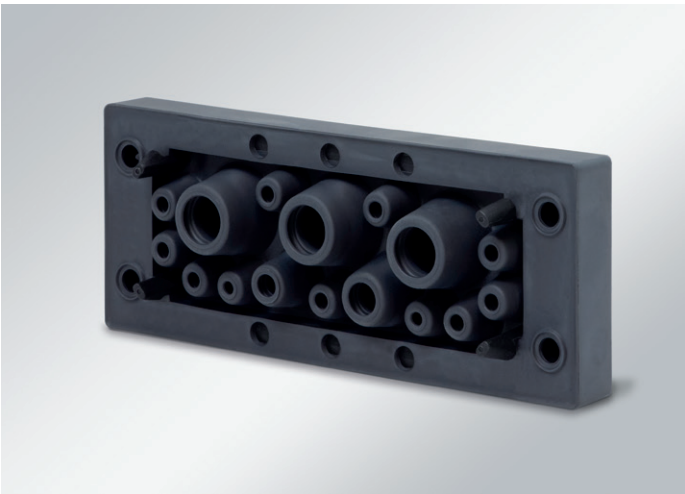
Saves time and money during installation and maintenance.

High tightness and strain relief

The high protection ratings ensure the performance of the cable installation, especially in outdoor areas.

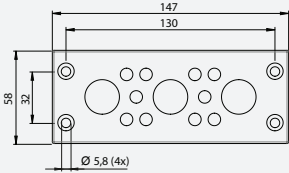
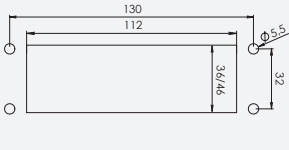
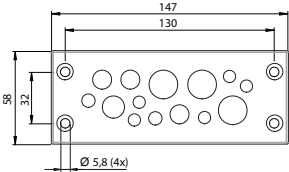
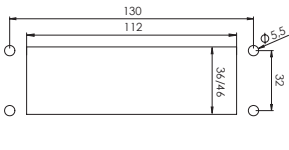
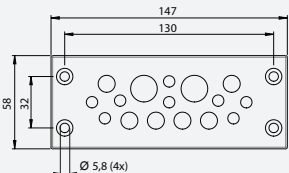
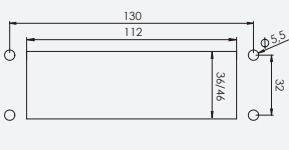
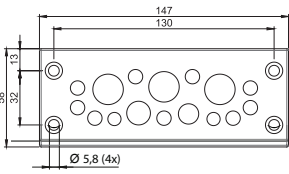
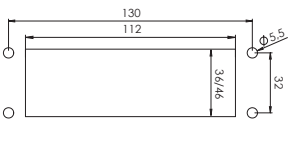
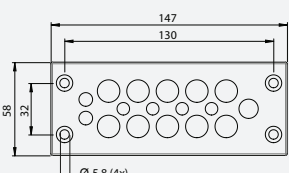
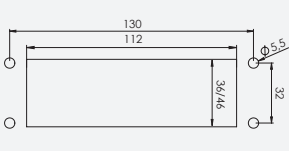
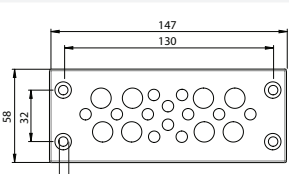
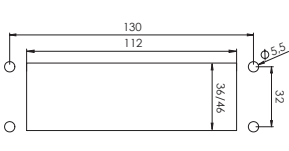
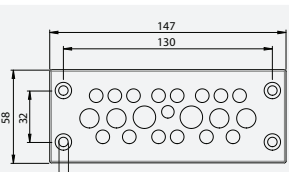
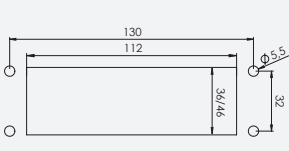
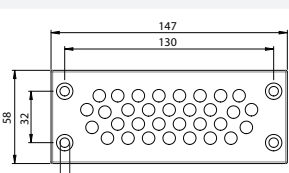
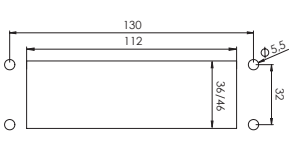
Features

- Certified protection IP66/IP68* (in accordance with EN 60529)
- Snap-on/screw-on assembly
- Suitable for standardised cut-outs



Specifications	
Material	Frame: Polyamide (PA) Membrane: TPE with UV resistance F1
Colour	■ anthracite (similar RAL 7016)
Flame class	UL 94 V-1, self-extinguishing
IP rating	IP65/IP66/IP67/IP68* (certified according to EN 60529:2014-09)
Temperature	-40°C to 120°C (static)
Properties	Silicone free
Installation height	14 mm
Cut-out	36 x 112 mm

* IP67/IP68 only when screw mounted

Description	Cut-out Drilling template	Type	Cut-out	Number of cables	Order No.	PU
		KEL-DPU 24 13 OD	36 x 112 mm		■ 63940	10
		KEL-DPU 24 13 OD with threaded bushings M4	36 x 112 mm	10× 3,2 – 6,3 mm 3× 16 – 20,5 mm	■ 63940.400	10
		KEL-DPU 24 13 OD with stainless steel threaded bushings M4	36 x 112 mm		■ 63940.240	10
		KEL-DPU 24 14 OD	36 x 112 mm		■ 63944	10
		KEL-DPU 24 14 OD with threaded bushings M4	36 x 112 mm	5× 3,2 – 6,3 mm 2× 4 – 7,5 mm 3× 5,5 – 10,5 mm 1× 8 – 12,5 mm	■ 63944.400	10
		KEL-DPU 24 14 OD with stainless steel threaded bushings M4	36 x 112 mm	3× 12 – 16,2 mm	■ 63944.240	10
		KEL-DPU 24 16 OD	36 x 112 mm		■ 63936	10
		KEL-DPU 24 16 OD with threaded bushings M4	36 x 112 mm	8× 3,2 – 5,5 mm 6× 5 – 8,5 mm 2× 9,5 – 14,5 mm	■ 63936.400	10
		KEL-DPU 24 16 OD with stainless steel threaded bushings M4	36 x 112 mm		■ 63936.240	10
		KEL-DPU 24 16-1 OD	36 x 112 mm		■ 63932	10
		KEL-DPU 24 16-1 OD with threaded bushings M4	36 x 112 mm	2× 3,2 – 6,3 mm 9× 4 – 7,5 mm 1× 5,5 – 10,5 mm 1× 8 – 12,5 mm	■ 63932.400	10
		KEL-DPU 24 16-1 OD with stainless steel threaded bushings M4	36 x 112 mm	3× 12 – 16,2 mm	■ 63932.240	10
		KEL-DPU 24 17 OD	36 x 112 mm		■ 63934	10
		KEL-DPU 24 17 OD with threaded bushings M4	36 x 112 mm	4× 3,2 – 6,3 mm 2× 4 – 7,5 mm 1× 5,5 – 10,5 mm 10× 8 – 12,5 mm	■ 63934.400	10
		KEL-DPU 24 17 OD with stainless steel threaded bushings M4	36 x 112 mm		■ 63934.240	10
		KEL-DPU 24 20 OD	36 x 112 mm		■ 63938	10
		KEL-DPU 24 20 OD with threaded bushings M4	36 x 112 mm	12× 3,2 – 5,5 mm 8× 5 – 10,5 mm	■ 63938.400	10
		KEL-DPU 24 20 OD with stainless steel threaded bushings M4	36 x 112 mm		■ 63938.240	10
		KEL-DPU 24 21 OD	36 x 112 mm		■ 63930	10
		KEL-DPU 24 21 OD with threaded bushings M4	36 x 112 mm	1× 3,2 – 6,3 mm 14× 4 – 7,5 mm 4× 5,5 – 10,5 mm 2× 8 – 12,5 mm	■ 63930.400	10
		KEL-DPU 24 21 OD with stainless steel threaded bushings M4	36 x 112 mm		■ 63930.240	10
		KEL-DPU 24 32 OD	36 x 112 mm		■ 63942	10
		KEL-DPU 24 32 OD with threaded bushings M4	36 x 112 mm	32× 3,2 – 6,3 mm	■ 63942.400	10
		KEL-DPU 24 32 OD with stainless steel threaded bushings M4	36 x 112 mm		■ 63942.240	10

AT-HA

Adapter grommet, large for industrial connectors 3A or 4A



The AT-HA grommet is part of the IMAS-CONNECT modular adapter system and for the first time enables the direct integration of 3A or 4A inserts into an adapter grommet – without the need for an additional cut-out.

The AT-HA grommet is based on a large KT cable grommet. A robust polyamide body is integrated into the grommet. It is fully compatible with all icotek cable entry frames of the KT system and is supplied ready for use with a pre-assembled locking element.

In combination with the 3A or 4A insert sets and matching connector housings for M20 or M25 with cable gland (see table), the AT-HA grommet offers a compact, efficient and flexible solution for use in industrial applications.

User benefits

- Space-saving thanks to integration of the connector in the cable entry frame
- Can be combined with existing frame solutions
- No additional cut-outs are required
- Very easy to assemble
- Compatible with numerous insert manufacturers

Features

- High degree of protection IP65 when plugged in
- Housing with M20 cable gland for cable diameters of 6 – 12 mm or M25 for cable diameters of 13 – 18 mm available



Specifications	
Material	Grommet: Elastomer Body: Polyamide
Flame class	UL 94 V-0, self-extinguishing
Protection class	IP54 with protective cover (optionally available) IP65 when plugged in
Temperature	-40°C to +100°C (static)
Properties	Halogen free, silicone free



Type	Height × Width × Length	Material	Suitable for insert	Order No.	PU
AT-HA	42 x 41,5 x 19 mm	Polyamid, Elastomer	Insert 3A or 4A	39985	5

Compatible housings and inserts

Type	with cable gland	Suitable for insert	Order No.	PU
Housing KV 20	Cable gland M20	Insert 3A or 4A	55514	5
Housing KV 25	Cable gland M25	Insert 3A or 4A	55515	5

Type	Set consists of	Suitable for	Order No.	PU
Insert set 3A	Pin and socket insert 3A	AT-HA	55510	5
Insert set 4A	Pin and socket insert 4A	AT-HA	55511	5

MB

Earthing tape green/yellow



The flat tapes for optimum earth connections are also available with green and yellow shrink sleeve. This provides clear visual colour identification.

The earthing tapes are made of highly flexible stranded wires with pressed-on contact pads and a coloured shrink sleeve for identification.

The minimum transition and connecting resistance makes them perfectly suitable for use as earthing tapes.

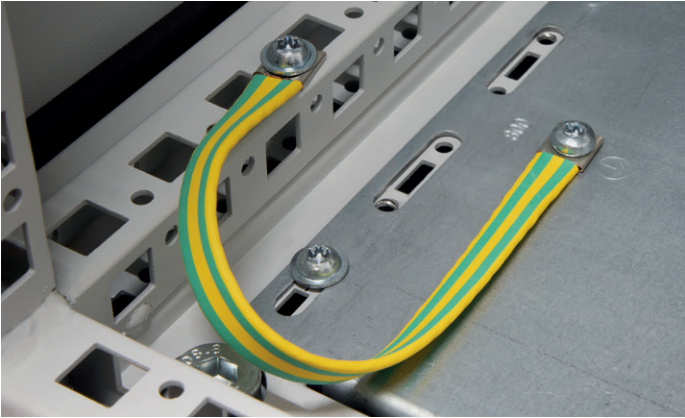
User benefits

- Available in a variety of lengths and cross-sections
- Low impedances

Features

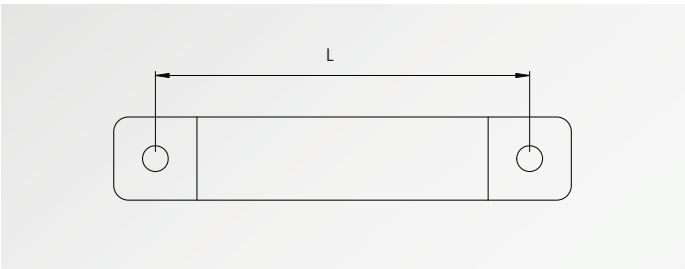
Current Load

- | | |
|------------------------|-------------|
| ▪ Cross-section 6 mm² | 67 – 80 A |
| ▪ Cross-section 16 mm² | 132 – 157 A |
| ▪ Cross-section 25 mm² | 177 – 210 A |



Specifications

Material earthing tape	Copper, tin-plated
Material contact pads	Copper, tin-plated
Material shrink sleeve	Polyolefin
Temperature	-20°C to +80°C (static)



Type	Distance L [mm]	Cross-section [mm²]	Hole size	Order No.	PU
MB 6 C-T 200 M4 GG	200 mm	6 mm²	M4	32707.800	10
MB 6 C-T 200 M6 GG	200 mm	6 mm²	M6	32702.800	10
MB 16 C-T 200 M6 GG	200 mm	16 mm²	M6	32764.800	10
MB 16 C-T 200 M8 GG	200 mm	16 mm²	M8	32765.800	10
MB 16 C-T 250 M8 GG	250 mm	16 mm²	M8	32766.800	10
MB 16 C-T 300 M6 GG	300 mm	16 mm²	M6	32767.800	10
MB 16 C-T 300 M8 GG	300 mm	16 mm²	M8	32768.800	10
MB 25 C-T 300 M8 GG	300 mm	25 mm²	M8	32806.800	10

KT-BL

Split cable grommets for KEL-ER-BL
for the food industry
in signal colour blue
small, multi



In addition to the single cable grommets, multiple grommets are now also available in the KT-BL series.

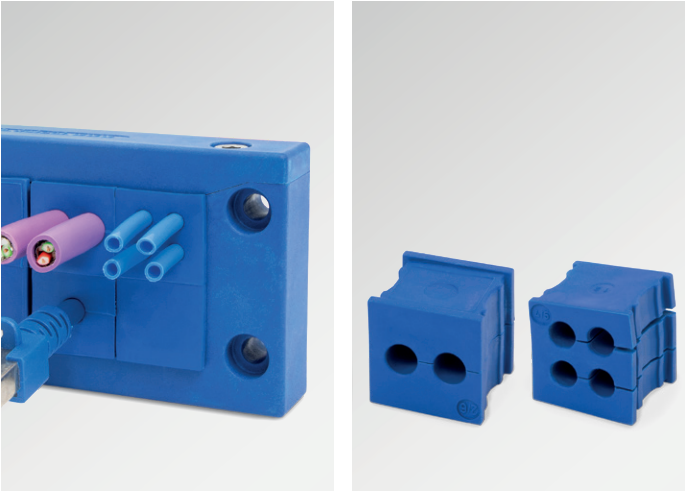
The KT-BL range of grommets are particularly suitable for the use with the KEL-ER-BL cable entry frames. The signal colour blue provides clear visual colour identification.

User benefits

- Routing of cables with and without connectors through the cable entry frame KEL-ER-BL
- Protection class IP54
- High strain relief in accordance with EN 62444

Features

- Available for a wide range of cable diameters
- Signal colour blue for a clear visual colour recognition in the food industry



Specifications	
Material	Elastomer
Flame class	UL 94 V-0, self-extinguishing
IP rating	IP54
Colour	Blue (similar to Signal blue RAL 5005)
Temperature	-40°C to +100°C (static)
Properties	Halogen-free, silicone-free

Description	Type	Clamping range	Order No.	PU
	KT-BL 2 1	2x ø 1 mm	41235	10
	KT-BL 2 2	2x ø 2 mm	41236	10
	KT-BL 2 3	2x ø 3 mm	41237	10
	KT-BL 2 4	2x ø 4 mm	41238	10
	KT-BL 2 5	2x ø 5 mm	41239	10
	KT-BL 2 6	2x ø 6 mm	41240	10
	KT-BL 2 7	2x ø 7 mm	41241	10
	KT-BL 2 8	2x ø 8 mm	41242	10
	KT-BL 4 2	4x ø 2 mm	41243	10
	KT-BL 4 3	4x ø 3 mm	41244	10
	KT-BL 4 4	4x ø 4 mm	41245	10
	KT-BL 4 5	4x ø 5 mm	41246	10
	KT-BL 4 6	4x ø 6 mm	41247	10

ST 4,5

Plug for QT cable grommet



The ST plug series has been extended to include a variant with a diameter of 4.5 mm.

The plug is combined with the split QT 4|4.5 cable grommet (Order no. 42583), for which there was previously no suitable plug. This further expands the QT system portfolio and offers even more flexibility for various applications.

Plugs are used to close grommets which are not equipped with cables. IP ratings of the grommets remain. Perfect for applications where cables have been removed or might be routed at a later stage.

User benefits

- For securely closing unused cable grommets

Features

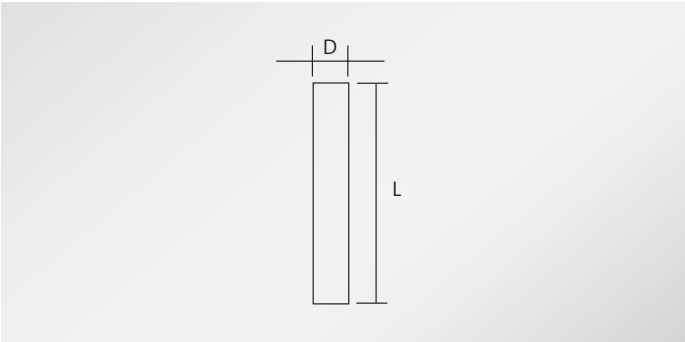
- Compatible with QT 4|4.5 cable grommet



Specifications

Material	Polyamide (PA), white
Flame class	UL 94 V-0, self-extinguishing
IP rating	IP rating of grommets remains
UL type rating	UL type 12 (acc. to UL 50E)
Temperature	-40°C to +120°C
Properties	Halogen-free, silicone-free

Type	Diameter D	Length L	Compatible with cable grommet	Order No.	PU
ST 4,5	4,5 mm	25 mm	QT 4 4.5	42907	25



icotek GmbH & Co. KG

Bischof-von-Lipp-Straße 1
73569 Eschach | Germany
Tel +49 7175 9 23 80-0
Fax +49 7175 9 23 80-50
info@icotek.com
www.icotek.com

icotek (swiss) AG

Wiesenstrasse 14
9327 Tübach | Switzerland
Tel +41 71 858 23 23
Fax +41 71 858 23 24
info@icotek.ch
www.icotek.ch

icotek SARL

130, rue des terres Bourdin
69140 Rillieux-la-Pape
France
Tél +33 4 81 91 97 65
Fax +33 4 81 91 97 68
info@icotek.fr
www.icotek.fr

icotek Italia s.r.l.

Via Dante Alighieri, 26/28
20029 Turbigo (MI) | Italia
Tel +39 0331 152 03 23
info@icotek.it
www.icotek.it

icotek Iberia S.L.

Carrer de la Ciència 19B
08850 Gavà, Barcelona
Espanya
Tel +34 666 449 978
info@icotek.es
www.icotek.es

icotek Limited

Unit C5,
Broadoak Business Park
Ashburton Road West,
Trafford Park
Manchester M17 1RW | UK
Phone +44 161 222 3454
info@icotek.co.uk
www.icotek.co.uk

icotek Elektronik Tic. Ltd. Şti.

Fevzi Çakmak Mah.,
Bilginler Sok. No: 17/A-B
34899 | Pendik, İstanbul
Türkiye
Tel +90 216 396 59 59
info@icotek.com.tr
www.icotek.com.tr

icotek Corp.

3435 N Kimball Ave
Chicago, IL 60618 | USA
Phone +1 312.643.2315
info@icotek-usa.com
www.icotek-usa.com

icotek Cable Management Trading (Shanghai) Co. Ltd

1st-2nd floor, Building 8,
No. 188, Zhongchen Road,
Songjiang District,
Shanghai City, 201613
Tel +86 21 5767 6805
Fax +86 21 5765 9635
info@icotek.cn
www.icotek.cn

icotek India Pvt Ltd

No 14-b, 4th Cross Rd
Veerasandra Industrial Area
Phase 2, Electronic City
Bengaluru, Karnataka 560100
India
Phone +91 953 567 3112
info@icotek.in
www.icotek.in



Request your
free product sample:
www.icotek.com

