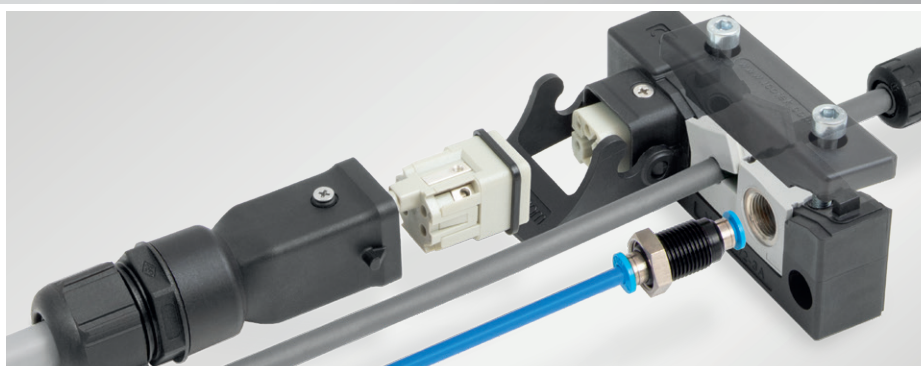


Product innovations March 2025

New products and product extensions



The innovative pioneers of smart cable management

Expertise in a wide range of industries



Automation | Robotics



Automotive Engineering | eMobility



Cleanroom Technology



Control Panel Construction



Food Processing & Packaging



Mechanical Engineering



Pneumatics



Railroad Technology



Renewable Energies



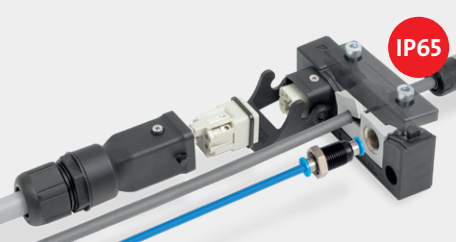
We have been successfully developing innovative systems for cable entry and EMC cable shielding for almost 30 years. Leading global manufacturers from various industries rely on our expertise and innovative strength. Numerous patents and certifications are both an incentive and an aspiration for us.

News from the icotek product world – find out all about our latest product innovations here.

New products and extensions

March 2025

MIS 4 – 5



Split cable entry frame with connection for 3A and 4A connectors

IP65 UL TYPE 12 IEC 61984 UL 1977 UL ECBT2

KEL-DPFR 6 – 7



Cable entry with conical structures

IP66 UL TYPE 12 UL TYPE 4X HL3 EN 45545-2 EN 61373

KEL-DP 12 8



Round cable entry plate for tool-free assembly

IP65 UL TYPE 12 HL3 EN 45545-2 EN 61373 RISA

KEL-SCDP 12, 16, 20 9



Round cable entry plate, pluggable, with a large sealing range

IP65 HL3 EN 45545-2 EN 61373 RISA UV ISO 4892-2A ECOLAB certified

KEL-DPZ-HD 25 10



Round cable entry plate Hygienic Design Line

IP68 UL TYPE 12 UL TYPE 4X FDA HYGIENIC DESIGN LINE

TE-M 25 11



Thread extension for cable glands and cable entry plates

HL3 EN 45545-2 ECOLAB certified RoHS compliant Made in Germany

KBH-R-TX 12



Pluggable holder for hook-and-loop tapes for the Telex rail

HL3 EN 45545-2 UV ISO 4892-2A RoHS compliant Made in Germany

LFZ|SKL M6 13



EMC shield clamp for screw assembly, with integrated strain relief function

EMV EMC CEM EN 61373 RISA RoHS compliant Made in Germany

PFZ|SKL, PFZ-M|MSKL, PF|SKL, PF|MSKL 14, 15



EMC shield clamp for 10 x 3 mm bus bar, with or without integrated strain relief function

EMV EMC CEM EN 61373 RISA RoHS compliant Made in Germany

*4X for indoor use only

The modular interface system MIS is a split cable entry for cables with and without connectors in combination with industrial connectors 3A or 4A.

An industrial connector of size 3A or 4A can be plugged directly onto the frame. Cables with a diameter of 1 to 15 mm can be routed, sealed and strain relieved in accordance with EN 62444. The combination of industrial connector and cable entry saves additional cut-outs and therefore space.

The cable entry frame consists of an add-on housing for the socket insert and space for two cable grommets. The counterpart consists of a housing for the pin insert and a cable gland, either M20 or M25.

The MIS fits onto a KEL-E3 cut-out (65 mm x 24 mm). No additional flat gasket is required for wall mounting thanks to the injected seal on the back. The version with V2A screws enables greater corrosion resistance. The version with threaded bushings allows the cable entry frame to be screwed to the inside of the enclosure.

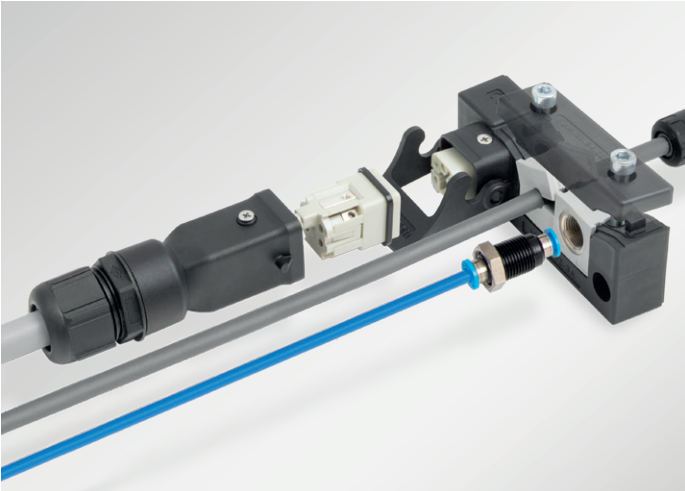
The MIS is CE-compliant and compatible with numerous insert manufacturers. The MIS can be ordered without inserts, with 3A or with 4A insert sets. A cover for the plug connection and grommets is not included in the scope of delivery.

Your benefits

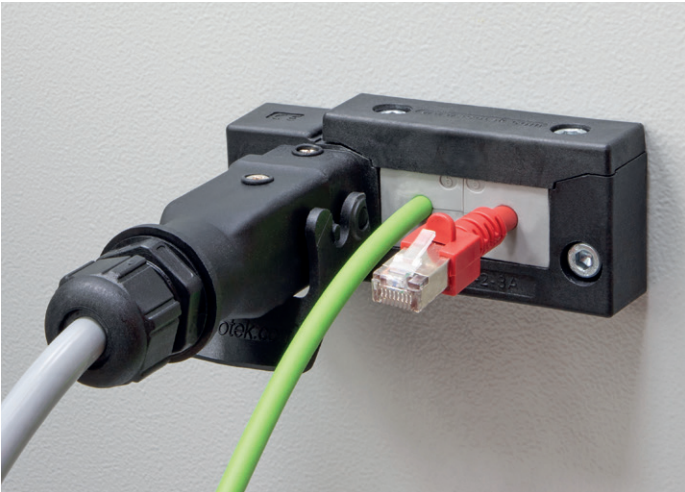
- Market innovation – there is nothing like it
- Space saving through numerous possible combinations of industrial connectors and frame solutions
- Warranty on pre-terminated cables remains
- Connectors and cables can be combined in one frame
- High stability, vibration-proof
- Very easy to assemble
- High flexibility
- Captive screws
- Integrated seal

Features

- IP65 (with correct selection of single and double cable grommets)
- Strain relief according to EN 62444
- CE-compliant and compatible with numerous insert manufacturers
- UL 94 V-0, self-extinguishing
- Housing with M20 cable gland for cable diameters from 6 – 12 mm or M25 for cable diameters from 13 – 18 mm
- IK04 impact resistance



4A connector and various cables combined in one frame



Specifications	
Material	Polyamide (PA)
Flame class	UL 94 V-0, self-extinguishing
IP rating	IP54 with protective cover IP65 in plugged-in state
IK impact resistance	IK04
Temperature	-40°C to +120°C (static)
Properties	Halogen free, silicone free



Type	Number of grommets KT small	Insert 3A 4A	Order No.	PU
MIS-E3 2 KV20	2	—	55500	5
MIS-E3 2 KV20 V2A, with V2A screws	2	—	55500.200	5
MIS-E3 2 KV20 M4, with threaded bushings M4	2	—	55500.400	5
MIS-E3 2 KV25	2	—	55501	5
MIS-E3 2 KV25 V2A, with V2A screws	2	—	55501.200	5
MIS-E3 2 KV25 M4, with threaded bushings M4	2	—	55501.400	5
MIS-E3 2 KV20 3A	2	3A	55502	5
MIS-E3 2 KV20 3A V2A, with V2A screws	2	3A	55502.200	5
MIS-E3 2 KV20 3A M4, with threaded bushings M4	2	3A	55502.400	5
MIS-E3 2 KV25 3A	2	3A	55503	5
MIS-E3 2 KV25 3A V2A, with V2A screws	2	3A	55503.200	5
MIS-E3 2 KV25 3A M4, with threaded bushings M4	2	3A	55503.400	5
MIS-E3 2 KV20 4A	2	4A	55504	5
MIS-E3 2 KV20 4A V2A, with V2A screws	2	4A	55504.200	5
MIS-E3 2 KV20 4A M4, with threaded bushings M4	2	4A	55504.400	5
MIS-E3 2 KV25 4A	2	4A	55505	5
MIS-E3 2 KV25 4A V2A, with V2A screws	2	4A	55505.200	5
MIS-E3 2 KV25 4A M4, with threaded bushings M4	2	4A	55505.400	5

KEL-DPFR

Cable entry plate

with IP66/IP65 protection



The new series of cable entry plates is characterised by conical structures that allow a wide range of cable diameters to be routed through a single cut-out.

Thanks to this shape, the cable entry can react flexibly to different diameters and at the same time it provides reliable strain relief and sealing. This allows installations to be carried out faster, more efficiently and in a more space-saving manner.

Another advantage of these cable entries is that they are based on standardised cut-outs. This facilitates integration into existing systems and ensures a high level of compatibility in various applications.

Flexible clamping range

Thanks to the special cone-shaped sealing membranes, cables of different diameters can be securely routed and fixed in place.

Easy installation

The cable entry can be easily inserted into standardised cut-outs and ensures a fast and tool-free installation.

High tightness

The cable entries offer a protection rating of up to IP66/IP65 and are therefore optimally sealed against dust, dirt and moisture.

Wide range of applications

Whether in mechanical and plant engineering, in automation technology or in enclosures – this solution is ideal for applications that require a high degree of flexibility in cable routing.

Benefits

- Maximum flexibility
- Very quick and easy installation
- Space saving
- Very large clamping range from 3 – 28 mm
- Rigid cables can be inserted at an angle without breaking the membrane
- Two sizes with a total of seven configurations
- Only four screws required for installation
- Low storage costs

Features

- Sealing according to IP66/65 (certified according to EN 60529:2000-09)
- Suitable for standard cut-outs
- Conical shape of the entry pots
- One-piece cable entry



Optimised membrane for easy insertion of rigid cables



Specifications	
Material	Frame: Polyamide (PA) Membrane: Elastomere (TPE)
Colour	grey (similar to RAL 7035), black
Flame class	UL 94 V-0, self-extinguishing
IP rating	IP66/65 (certified according to EN 60529:2000-09)
Temperature	-40°C to +100°C (static)
Properties	Halogen free, silicone free
Installation height	KEL-DPFR 24 8: 40 mm KEL-DPFR 24 3: 47 mm KEL-DPFR 24 4: 47 mm

Description	Cut-out Drilling template	Type	Cut-out dimension	Number of cables	Order No.	PU
		KEL-DPFR 24 3	36 x 112 mm	3x DPF 14 – 28	<div>■ 43915</div> <div>■ 53915</div>	5
		KEL-DPFR 24 3 with threaded bushings M4	36 x 112 mm	3x DPF 14 – 28	<div>■ 43915.400</div> <div>■ 53915.400</div>	5
		KEL-DPFR 24 4	36 x 112 mm	4x DPF 4 – 18	<div>■ 43916</div> <div>■ 53916</div>	5
		KEL-DPFR 24 4 with threaded bushings M4	36 x 112 mm	4x DPF 4 – 18	<div>■ 43916.400</div> <div>■ 53916.400</div>	5
		KEL-DPFR 24 8	36 x 112 mm	8x DPF 3 – 12	<div>■ 43917</div> <div>■ 53917</div>	5
		KEL-DPFR 24 8 with threaded bushings M4	36 x 112 mm	8x DPF 3 – 12	<div>■ 43917.400</div> <div>■ 53917.400</div>	5
		KEL-DPFR 24 3-1	36 x 112 mm	2x DPF 14 – 28 1x DPF 4 – 18	<div>■ 43918</div> <div>■ 53918</div>	5
		KEL-DPFR 24 3-1 with threaded bushings M4	36 x 112 mm	2x DPF 14 – 28 1x DPF 4 – 18	<div>■ 43918.400</div> <div>■ 53918.400</div>	5
		KEL-DPFR 16 2	36 x 112 mm	2x DPF 14 – 28	<div>■ 43920</div> <div>■ 53920</div>	5
		KEL-DPZ 16 2 with threaded bushings M4	36 x 112 mm	2x DPF 14 – 28	<div>■ 43920.400</div> <div>■ 53920.400</div>	5
		KEL-DPFR 16 3	36 x 112 mm	3x DPF 4 – 18	<div>■ 43921</div> <div>■ 53921</div>	5
		KEL-DPFR 16 3 with threaded bushings M4	36 x 112 mm	3x DPF 4 – 18	<div>■ 43921.400</div> <div>■ 53921.400</div>	5
		KEL-DPFR 16 6	36 x 86 mm	6x DPF 3 – 12	<div>■ 43922</div> <div>■ 53922</div>	5
		KEL-DPFR 16 6 with threaded bushings M4	36 x 86 mm	6x DPF 3 – 12	<div>■ 43922.400</div> <div>■ 53922.400</div>	5

KEL-DP 12

Cable entry plate

for tool-free plug-in assembly

with IP65 rating



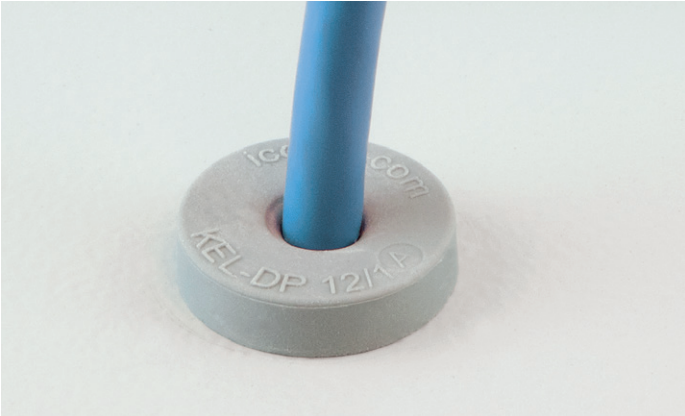
The KEL-DP series has been extended with a size 12 version. The round KEL-DP 12 fits into metric M12 cut-outs. It is assembled without tools by simply snapping it into the cut-out.

Benefits

- Simple, tool-free installation
- Very good strain relief on the cable
- Optimum edge protection and sealing
- Cost-effective solution

Features

- Suitable for metric standard cut-out M12
- Suitable for wall thickness 1.5 – 2.5 mm



Specifications

Material	Elastomere
Colour	■ grey (similar to RAL 7035)
Flame class	UL 94 V-0, self-extinguishing
IP rating	IP65 (certified according to EN 60529: 2000-09)
Temperature	-40°C to +100°C (static)
Properties	Halogen free, silicone free
Installation height	5 mm
Wall thickness	1.5 – 2.5 mm
Cut-out dimensions	Metric M12

Type	Number of cables	Cut-out	External diameter	Order No.	PU
KEL-DP 12 1	1× max. 6,2 mm	ø 12 mm	19 mm	■ 43603	10



KEL-DP round series in the catalogue from page 168

KEL-SCDP 12 | 16 | 20
KEL-SCDP-RW 12 | 16 | 20

Cable entry plate
for tool-free plug-in assembly
with a large sealing range and IP65 rating



The KEL-SCDP and KEL-SCDP-RW series have been extended to include sizes 12, 16 and 20. The unique advantage lies in the very large sealing range. Depending on the cable diameter, the circular membranes can be easily cut to the required sealing area.

The version KEL-SCDP-RW is approved for the use in the railway technology in accordance with EN45545-2 HL3.

Benefits

- Tool-free assembly
- Very large variable sealing range (0 – 13 mm)
- Flexible even with rigid cables
- Optimum edge protection and sealing
- Circular membranes are easy to remove

Features

- Suitable for metric standard cut-outs M12, M16 oder M20
- Suitable for wall thickness 1.5 – 4.0 mm
- * RW version for the railway technology sector



Specifications

Material	Elastomere
Colour	■ grey (similar to RAL 7035)
Flame class	UL 94 V-0, self-extinguishing
IP rating	IP65 (certified according to EN 60529:2014-09)
Temperature	KEL-SCDP: -40°C to +80°C (static) KEL-SCDP-RW: -40°C to +90°C (static)
Properties	Halogen free, silicone free
Installation height	5 mm
Wall thickness	1.5 – 4.0 mm
Cut-out dimensions	Metric M12, M16, M20

	Type	Number of cables	Clamping range	Order No.	PU
	KEL-SCDP 12	1 max.	0 – 7.2 mm	■ 43477	10
	KEL-SCDP 16	1 max.	5 – 9.5 mm	■ 43478	10
	KEL-SCDP 20	1 max.	5 – 13 mm	■ 43479	10
	KEL-SCDP-RW 12	1 max.	0 – 7.2 mm	■ 43487	10
	KEL-SCDP-RW 16	1 max.	5 – 9.5 mm	■ 43488	10
	KEL-SCDP-RW 20	1 max.	5 – 13 mm	■ 43489	10

KEL-DPZ-HD 25

Cable entry plates

Hygienic Design Line



The KEL-DPZ-HD series has been extended to include two size 25 variants. The KEL-DPZ-HD cable entry plates with metric thread are designed for installation in food processing and packaging machinery.

Benefits

- Very flat design, very smooth surface (Ra 0.421 µm)
- Very large clamping areas
- High strain relief
- Dual sealing of cables (IP66/IP68)
- Reproducible cleaning process
- Very low moisture absorption
- High resistance to aromatic solvents, oils, greases, mineral products

Features

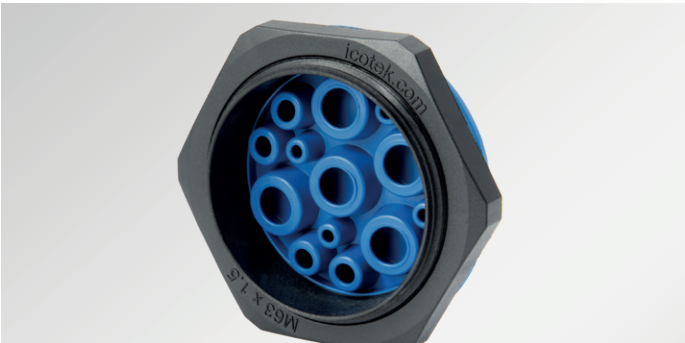
- Elastomer of the cable entry plate made of material according to 1935/2004/EG , (EU) 10/2011
- FDA compliant
- Developed according to hygienic design guidelines (EHEDG)
- Cable diameter 3,2 – 6,5 mm
- Suitable for metric cut-out M25



Specifications

Material	Polyamide and elastomere FDA compliant material Food approval acc. to 1935/2004/EG Food approval acc. to (EU) 10/2011
Flame class	UL 94 HB
IP rating	IP65/IP66/IP67/IP68
Colour	Blue (similar to Signal blue RAL 5005)
Temperature	-40°C to +80°C
Properties	Halogen-free, silicone-free

Type	Number of cables	Thread metric	Thread length	Max. wall thickness	External diameter	Installation height	Order No.	PU
KEL-DPZ-HD 25 3	2× 3,2 – 5,2 mm 1× 3,2 – 6,5 mm	M25 × 1.5	14 mm	7,0 mm	39 mm	8 mm	70345	5
KEL-DPZ-HD 25 4	4× 3,2 – 5,2 mm	M25 × 1.5	14 mm	7,0 mm	39 mm	8 mm	70346	5



KEL-DPZ-HD in the catalogue from page 428

TE-M 25

Thread extension

for cable glands and cable entry plates



The TE-M series has been extended to include size 25. The thread extension represents a real innovation in the field of cable management.

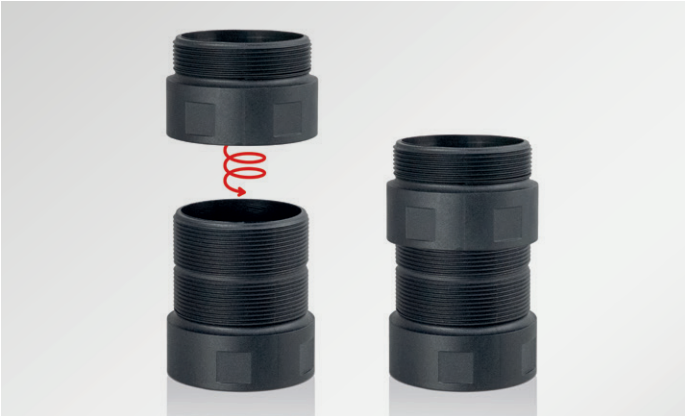
The different lengths can be flexibly combined or shortened at the designated points. This means that not only very large, but also dimensionally accurate distances can be overcome when routing the cable.

Benefits

- IP protection of the cable gland or cable entry plate used remains in place
- Different thread lengths can be flexibly combined with each other
- Larger lengths can be shortened at the notch between the threads, without damaging the threads

Features

- Wide range of applications in different industries such as construction, building services, caravans, cleanroom and more
- Especially suitable for sandwich panels of all wall thicknesses
- Almost endless extension possible
- Thread lengths 35 mm, 60 mm or 120 mm
- Indentation for wrench size for easy tightening of the screw connection
- Suitable for all round icotek cable glands and cable entry plates M25



Specifications

Material	Polyamide (PA)
Flame class	UL 94 V-0, self-extinguishing
Temperature	- 40°C to + 140°C (static)
Properties	Halogen free, silicone free
Cut-out size	ø 30 mm (standard sizes for hole saws)

Type	Thread	Length	External diameter	Wrench size	Order No.	PU
TE-M25 35	M25 x 1,5	35 mm	29,5 mm	SW 28	52316	5
TE-M25 60	M25 x 1,5	60 mm	29,5 mm	SW 28	52317	5
TE-M25 120	M25 x 1,5	120 mm	29,5 mm	SW 28	52318	5

KBH-R-TX

Pluggable holders for
hook-and-loop cable ties
for the Telex rail



The holders KBH serve as universal holder and as cable routing system for the hook-and-loop tape KLB and the hook-and-loop fastener KLKB. The holder for the Telex rail is a new addition to the range.

Benefits

- Assembly within seconds
- Secure hold
- Flexible usage

Features

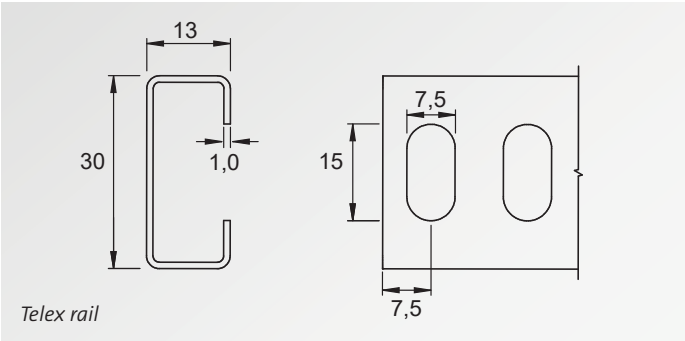
- Suitable for hook-and-loop tape KLB and hook-and-loop fastener KLKB
- The holders KBH are available for many other rail systems



Specifications

Material	Polyamide (PA)
Colour	Black
Flame class	UL 94 V-0, self-extinguishing
Temperature	-40°C to +140°C
Properties	Halogen-free, silicone-free

Description	Type	for KLKB KLB	Compatible with	Order No.	PU
Holder for hook-and-loop fastener, pluggable for Telex rail	KBH-R-TX	KLKB 200 × 7 KLKB 200 × 13 KLB 10 Cable ties up to 12 mm width	Telex rail	61005	100



KBH in the catalogue from page 200

LFZ|SKL M6

EMC shield clamps

for assembly with screws,

with strain relief function



The LFZ|SKL shield clamp is now also available with an M6 mounting hole.

Whenever a cable shielding is required with the possibility of grounding, EMC shield clamps can be used. Shield clamps are easy to use and effective in dissipating conducted disturbances.

Strain relief function

The cable is fixed via the cable jacket using cable ties.

Assembly

The shield clamps can be mounted using screws, e.g. on a mounting plate.

Benefits

- Large cable shield contact area
- Easy, tool-free assembly
- The spring design requires no adjustments and will permanently maintain contact to the cable shield

Features

- Integrated strain relief function
- Shock and vibration resistant, maintenance free



Specifications

Material SKL clamp	Spring steel, zinc plated
Material LFZ foot	Steel, galvanically zinc plated
Mounting hole	6.2 mm

Type	Mounting hole	Clamping range	Order No.	PU
LFZ SKL 1.5 – 3 mm	M6	1.5 – 3 mm	37701	10
LFZ SKL 3 – 6 mm	M6	3 – 6 mm	37702	10
LFZ SKL 6 – 8 mm	M6	6 – 8 mm	37703	10
LFZ SKL 8 – 11 mm	M6	8 – 11 mm	37704	10
LFZ SKL 11 – 17 mm	M6	11 – 17 mm	37705	10
LFZ SKL 17 – 22 mm	M6	17 – 22 mm	37706	10
LFZ SKL 22 – 30 mm	M6	22 – 30 mm	37707	10
LFZ SKL 30 – 38 mm	M6	30 – 38 mm	37708	10

PFZ-M|MSKL, PFZ|SKL
EMC shield clamps
for 10 × 3 mm bus bar,
with integrated strain relief function



With this generation of shield clamps for the bus bar, the clamp sits directly above the bus bar. This saves space in the alignment direction of the electrical cables.

Whenever a cable shielding is required with the possibility of grounding, EMC shield clamps can be used. Shield clamps are easy to use and effective in dissipating conducted disturbances.

Strain relief function

The cable is fixed via the cable jacket using cable ties.

Assembly

The shield clamps are mounted by snapping them onto a 10 × 3 mm bus bar.

Benefits

- Designed for high density applications
- Large cable shield contact area
- Easy, tool-free assembly

Features

- Integrated strain relief function
- Shock and vibration resistant, maintenance free



Specifications	
Material MSKL clamp, SKL clamp	Spring steel, zinc plated
Material PFZ foot	Spring steel, zinc plated

Description	Clamping range	Order No.	PU
PFZ-M MSKL 3 – 12 mm	3 – 12 mm	37716	10
PFZ-M MSKL 8 – 18 mm	8 – 18 mm	37717	10
PFZ SKL 1.5 – 3 mm	1.5 – 3 mm	37712.1	10
PFZ SKL 3 – 6 mm	3 – 6 mm	37712.2	10
PFZ SKL 6 – 8 mm	6 – 8 mm	37712.3	10
PFZ SKL 8 – 11 mm	8 – 11 mm	37712.4	10
PFZ SKL 11 – 17 mm	11 – 17 mm	37712.5	10

PF|MSKL, PF|SKL

EMC shield clamps

for 10 × 3 mm bus bar,
without integrated strain relief function



With this generation of shield clamps for the bus bar, the clamp sits directly above the bus bar. This saves space in the alignment direction of the electrical cables.

Whenever a cable shielding is required with the possibility of grounding, EMC shield clamps can be used. Shield clamps are easy to use and effective in dissipating conducted disturbances.

Assembly

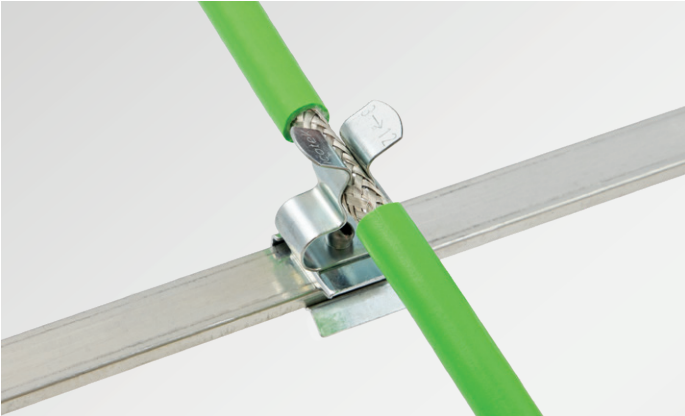
The shield clamps are mounted by snapping them onto a 10 × 3 mm bus bar.

Benefits

- Designed for high density applications
- Large cable shield contact area
- Easy, tool-free assembly

Features

- Shock and vibration resistant, maintenance free



Specifications

Material MSKL clamp, SKL clamp	Spring steel, zinc plated
Material PF foot	Spring steel, zinc plated

Description	Clamping range	Order No.	PU
PF MSKL 3 – 12 mm	3 – 12 mm	37714	10
PF MSKL 8 – 18 mm	8 – 18 mm	37715	10
PF SKL 1.5 – 3 mm	1.5 – 3 mm	37710.1	10
PF SKL 3 – 6 mm	3 – 6 mm	37710.2	10
PF SKL 6 – 8 mm	6 – 8 mm	37710.3	10
PF SKL 8 – 11 mm	8 – 11 mm	37710.4	10
PF SKL 11 – 17 mm	11 – 17 mm	37710.5	10

icotek GmbH & Co. KG

Bischof-von-Lipp-Straße 1
73569 Eschach | Germany
Tel +49 7175 9 23 80-0
Fax +49 7175 9 23 80-50
info@icotek.com
www.icotek.com

icotek (swiss) AG

Wiesenstrasse 14
9327 Tübach | Switzerland
Tel +41 71 858 23 23
Fax +41 71 858 23 24
info@icotek.ch
www.icotek.ch

icotek SARL

130, rue des terres Bourdin
69140 Rillieux-la-Pape
France
Tél +33 4 81 91 97 65
Fax +33 4 81 91 97 68
info@icotek.fr
www.icotek.fr

icotek Italia s.r.l.

Via Dante Alighieri, 26/28
20029 Turbigo (MI) | Italia
Tel +39 0331 152 03 23
info@icotek.it
www.icotek.it

icotek Iberia S.L.

Carrer de la Ciència 19B
08850 Gavà, Barcelona
España
Tel +34 666 449 978
info@icotek.es
www.icotek.es

icotek Limited

Unit C5,
Broadoak Business Park
Ashburton Road West,
Trafford Park
Manchester M17 1RW | UK
Phone +44 161 222 3454
info@icotek.co.uk
www.icotek.co.uk

icotek Elektronik Tic. Ltd. Şti.

Fevzi Çakmak Mah.,
Bilginler Sok. No: 17/A-B
34899 | Pendik, İstanbul
Türkiye
Tel +90 216 396 59 59
info@icotek.com.tr
www.icotek.com.tr

icotek Corp.

3435 N Kimball Ave
Chicago, IL 60618 | USA
Phone +1 312.643.2315
info@icotek-usa.com
www.icotek-usa.com

**icotek Cable Management
Trading (Shanghai) Co. Ltd**

1st-2nd floor, Building 8,
No. 188, Zhongchen Road,
Songjiang District,
Shanghai City, 201613
Tel +86 21 5767 6805
Fax +86 21 5765 9635
info@icotek.cn
www.icotek.cn

icotek India Pvt Ltd

No 14-b, 4th Cross Rd
Veerasandra Industrial Area
Phase 2, Electronic City
Bengaluru, Karnataka 560100
India
Phone +91 953 567 3112
info@icotek.in
www.icotek.in



Request your
free product sample:
www.icotek.com

