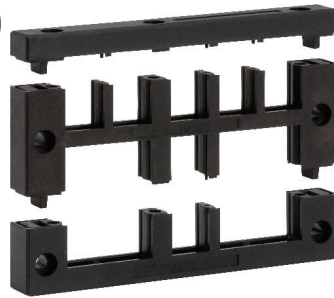


# KEL 24-E

## Extended cable entry frames



Also available with stainless steel screws (V2A).



Also available with threaded bushings.

**IP54**

### Product description

The cable entry frame KEL 24-E offers a larger frame size for routing a greater amount of cables, pipes or conduits.

The KEL24-E series are KEL 24 frames extended with an additional middle frame for routing additional cables. Thus allowing a quick, easy and cost effective routing solution for up to 60 cables.

All frame systems come with a rubber gasket.

### Advantages & benefits

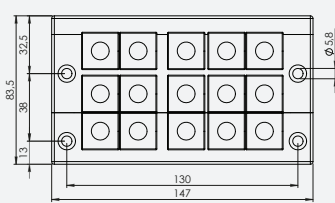
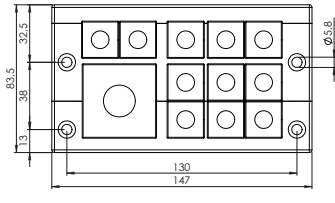
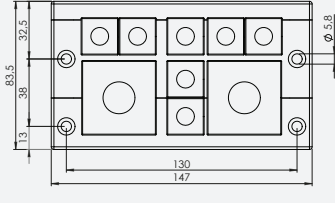
- Maintain manufacturer's warranty on pre-terminated cables
- Retrofits, repairs and maintenance can be done much more easily and quickly
- High cable density
- Strain relief according to EN 62444
- High stability, vibration resistant

### Specifications

Material	Polyamide (PA)
Flame class	UL94-Vo, self-extinguishing
IP rating	IP54, with gasket and correct selection of cable grommets (certified acc. to EN 60529)
Temperature Properties	- 40°C to + 140°C (static)
Cut-out dimensions	Halogen-free, silicone-free
Frame depth	66 × 112 mm / Page 220-221
	17 mm

### Accessories

KT Cable grommets	48 - 52
AT Adapter grommets	54 - 57
KEL-SNAP Mounting frames	31
KEL-EMC Cable collectors	148 - 150
ST Plugs	53

Description	Type	Order No.	Grommets small   large	PU
	KEL 24 15-E	42209	15 -	1
	KEL 24 15-E with V2A screws	42209.200	15 -	1
	KEL 24 12-E	42208	11 1	1
	KEL 24 12-E with V2A screws	42208.200	11 1	1
	KEL 24 9-E	42207	7 2	1
	KEL 24 9-E with V2A screws	42207.200	7 2	1
	KEL 24 10-E	49056	10 -	1
	KEL 24 10-E with V2A screws	49056.200	10 -	1