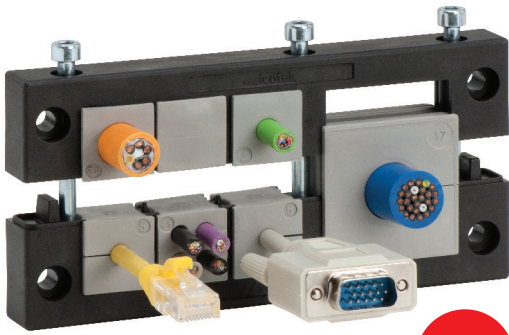


KEL 24

Cable entry frames



Configure online now

IP54

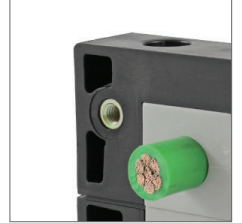


Split KT grommets



V2A anti-corrosive

Also available with stainless steel screws (V2A).



Also available with threaded bushings.

Product description

Centrally split cable entry system for routing cables with connectors, providing an IP54 / up to UL type 12 rating. The slit grommet matching the cable diameter is placed around the cable and inserted into the cable entry frame. Either a cut-out of 36 mm or 46 mm in height can be chosen depending on the cables being routed. The split cable entry frame KEL 24 is the same size as a standard 24 pin industrial connector. All frame systems come with a rubber gasket.

Advantages & benefits

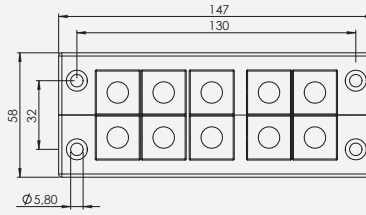
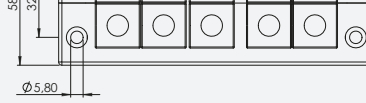
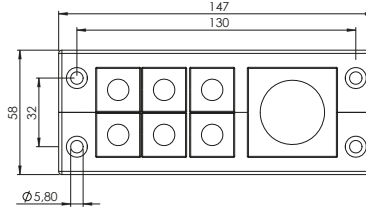
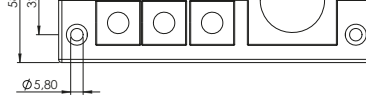
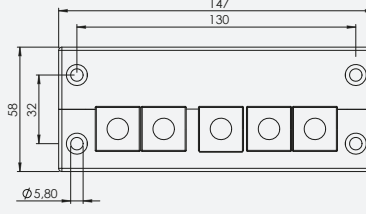
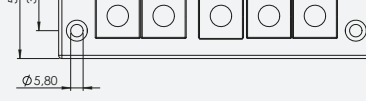
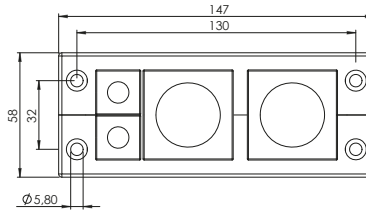

- Maintain manufacturer's warranty on pre-terminated cables
- Retrofits, repairs and maintenance can be done much more easily and quickly
- High cable density, wide variety of grommets
- Strain relief according to EN 62444
- High stability, vibration resistant

Specifications

Material	Polyamide (PA)
Flame class	UL94-Vo, self-extinguishing
IP rating	IP54, with gasket and correct selection of cable grommets (certified acc. to EN 60529)
UL type rating	UL type 12 (acc. to UL 50E)
Temperature	- 40°C to + 140°C (static)
Properties	Halogen-free, silicone-free
Cut-out dimensions	36/46 × 112 mm / Page 220-221
Frame depth	17 mm

Accessories

KT Cable grommets	48 - 52
AT Adapter grommets	54 - 57
KEL-SNAP Mounting frames	31
KEL-EMC Cable collectors	148 - 150
KDR Base plates	176 - 183
FP Flange plates	194 - 203
MP Module plates	188 - 189
ST Plugs	53

Description	Type	Order No.	Grommets small large	PU
	KEL 24 10	42241	10 -	10
	KEL 24 10 with V2A screws	42241.200	10 -	10
	KEL 24 7	42247	6 1	10
	KEL 24 7 with V2A screws	42247.200	6 1	10
	KEL 24 5	42248	5 -	10
	KEL 24 5 with V2A screws	42248.200	5 -	10
	KEL 24 4	42244	2 2	10
	KEL 24 4 with V2A screws	42244.200	2 2	10