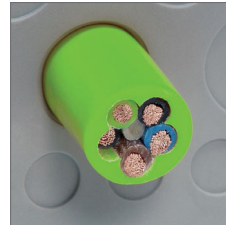


# KEL-DP round

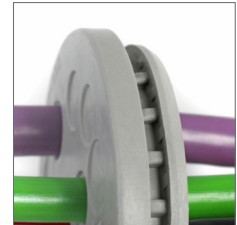
## Cable entry plates



Also available in black.



Membrane on front



Special fixing ribs ensure a centred fit.

### Product description

2.1

KEL-DP entry plates are designed for routing cables without connectors.

The KEL-DP products are a cost saving alternative to traditional cable glands.

Simply make a small hole in the thin membrane and push the cables through. The KEL-DP round provides protection IP65 / UL Type 12.

ST-B Plugs can be used for sealing pierced membranes if cables have been removed.

A special rib ensures a centred fit in the cut-outs.

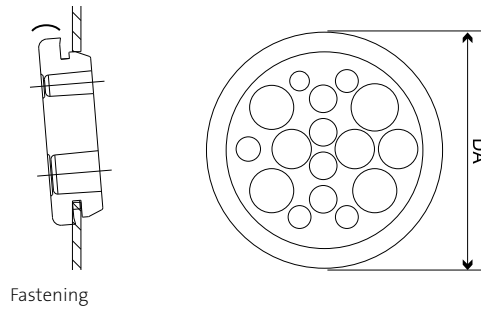
### Advantages & benefits

- Fast and easy assembly, no tools required
- High cable density
- Very good strain relief on the cable bundle
- Cost-effective
- For wall thickness 1.5 - 4 mm
- Hygienic design - free of dirt-collecting recesses

Type	Order No. Type A	Order No. Type B	Number of cables	Cut-out	External diameter DA	PU
<b>NEW</b> KEL-DP 20 4	43572	—	4× max. 5.2 mm	∅ 20 mm	27 mm	10
<b>NEW</b> KEL-DP 20 5	43573	—	1× max. 10.6 mm 2× max. 4.6 mm 2× max. 3.6 mm	∅ 20 mm	27 mm	10
<b>NEW</b> KEL-DP 20 9	43574	—	5× max. 4.6 mm 4× max. 3.6 mm	∅ 20 mm	27 mm	10
KEL-DP 25 4	43533 50533	—	4× max. 8 mm	∅ 25 mm	32 mm	10
KEL-DP 25 6	43531 50531	—	4× max. 5.2 mm 2× max. 9.4 mm	∅ 25 mm	32 mm	10
KEL-DP 32 10	43532 50532	43560 50560	6× max. 5.2 mm 2× max. 6.4 mm 2× max. 9.4 mm	∅ 32 mm	38 mm	10
KEL-DP 40 9	43536	43561	8× max. 9.5 mm 1× max. 11.3 mm	∅ 40 mm	50 mm	10
KEL-DP 40 16	43537	43563	2× max. 5.3 mm 10× max. 6.3 mm 2× max. 9.5 mm 2× max. 11.3 mm	∅ 40 mm	50 mm	10
KEL-DP 40 17	43538	43565	1× max. 4 mm 16× max. 7.2 mm	∅ 40 mm	50 mm	10

\* Only valid for grey product types

# KEL-DP round Cable entry plates



Type	Order No. Type A	Order No. Type B	Number of cables	Cut-out	External diameter DA	PU
KEL-DP 50 9	43554	43568	5× max. 7 mm 4× max. 18 mm	ø 50 mm	60 mm	10
	50554	50568				
KEL-DP 50 11	43555	43569	7× max. 7.2 mm 3× max. 11.2 mm 1× max. 22.5 mm	ø 50 mm	60 mm	10
	50555	50569				
KEL-DP 50 12	43551	43562	10× max. 9.2 mm 2× max. 11.2 mm	ø 50 mm	60 mm	10
	50551	50562				
KEL-DP 50 16	43550	43564	4× max. 5.3 mm 5× max. 6.3 mm 3× max. 9.5 mm 4× max. 11.3 mm	ø 50 mm	60 mm	10
	50550	50564				
KEL-DP 50 18	43553	43567	2× max. 4 mm 2× max. 6 mm 4× max. 7.2 mm 5× max. 9.4 mm 5× max. 12 mm	ø 50 mm	60 mm	10
	50553	50567				
KEL-DP 50 20	43552	43566	16× max. 6.3 mm 4× max. 9.3 mm	ø 50 mm	60 mm	10
	50552	50566				
KEL-DP 50 35	43556	43570	35× max. 5.2 mm	ø 50 mm	60 mm	10
	50556	50570				

## Specifications

<b>Material</b>	<b>Elastomer</b>
<b>Colour</b>	<input type="checkbox"/> grey (similar RAL 7035) <input checked="" type="checkbox"/> black
<b>Flame class</b>	UL94-Vo, self-extinguishing
<b>IP rating</b>	IP65 (certified acc. to EN 60529)
<b>UL type rating</b>	UL type 12 (acc. to UL 50E)
<b>Temperature</b>	- 40°C to + 100°C (static)
<b>Properties</b>	Halogen-free, silicone-free
<b>Cut-out dimensions</b>	Metric sizes
<b>Plate depth</b>	5 mm

Type A:	For wall thickness 1.5 - 2.5 mm
Type B:	For wall thickness 2.8 - 4 mm

## Accessories

ST-B Plugs	93
FP Flange plates	194 - 203

\* Only valid for grey product types