



IP66

UL TYPE 12

UL TYPE 4X

HL3

E45 EI30

UV

ECOLAB certified

RoHS compliant

Made in Germany



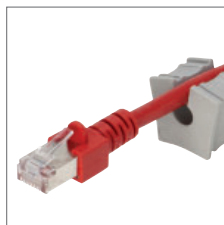
KEL-ER 16 Cable entry frames



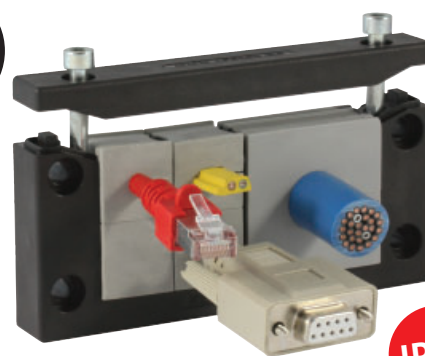
V2A anti-corrosive



Also available with threaded bushings.



Split KT grommets



1.11

Description	Type	Order No.	Grommets small large	PU
	KEL-ER 16 8	48168	8 -	10
	KEL-ER 16 8 with V2A screws	48168.200	8 -	10
	KEL-ER 16 5	48165	4 1	10
	KEL-ER 16 5 with V2A screws	48165.200	4 1	10
	KEL-ER 16 2	48162	- 2	10
	KEL-ER 16 2 with V2A screws	48162.200	- 2	10

Product description

Split cable entry system for routing and sealing cables with connectors, providing an IP66 / up to UL type 4X rating and strain relief for cable diameters from 1 to 16 mm (KT 1 - 15) and 16 to 35 mm (KT 16 - 34).

The new cable entry system is easy to install. Cable grommets are placed into compartments and are securely fixed to the frame during assembly. The KEL-ER 16 is the same size as a standard 16 pin industrial connector. All frame systems come with a rubber gasket.

Advantages & benefits

- Maintain manufacturer's warranty on pre-terminated cables
- Retrofits, repairs and maintenance can be done much more easily and quickly
- High cable density, wide variety of grommets
- Strain relief according to EN 62444
- High stability, vibration resistant

Specifications

Material	Polyamide (PA)
Flame class	UL94-Vo, self-extinguishing
IP rating	IP66, with gasket and correct selection of single grommets (certified acc. to EN 60529)
UL type rating	UL type 4X (acc. to UL 50E)
Temperature	- 40°C to + 140°C (static)
Properties	Halogen-free, silicone-free
Cut-out dimensions	36/46 × 86 mm / Page 220-221
Frame depth	17 mm

Accessories

KT Cable grommets	48 - 52
AT Adapter grommets	54 - 57
KEL-EMC Cable collectors	148 - 150
ST Plugs	53