

# KEL-ER-E

## Compact cable entry frames

Configure online now

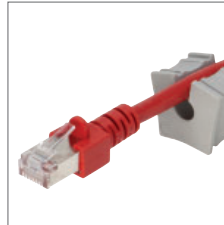


V2A anti-corrosive

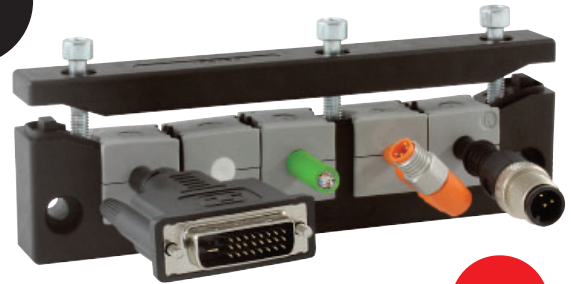
Also available with stainless steel screws (V2A).



Also available with threaded bushings.



Split KT grommets



**IP66**

1.11

Description	Type	Order No.	Cut-out [mm]	Grommets small   large	PU
	KEL-ER-E2	48249	43 × 24	2 -	10
	KEL-ER-E2 with V2A screws	48249.200	43 × 24	2 -	10
	KEL-ER-E3	48258	65 × 24	3 -	10
	KEL-ER-E3 with V2A screws	48258.200	65 × 24	3 -	10
	KEL-ER-E4	48259	86 × 24	4 -	10
	KEL-ER-E4 with V2A screws	48259.200	86 × 24	4 -	10
	KEL-ER-E5	48250	112 × 24	5 -	10
	KEL-ER-E5 with V2A screws	48250.200	112 × 24	5 -	10

### Product description

Split cable entry system for routing and sealing cables with connectors, providing an IP66 / up to UL type 12 rating and strain relief for cable diameters from 1 to 16 mm (KT 1 - 15). It is particularly suited for flat connectors. The small frame is ideal for applications with limited space.

The cable entry system is easy to install. Cable grommets are placed into compartments and are securely fixed to the frame during assembly. All frame systems come with a rubber gasket.

### Advantages & benefits

- Maintain manufacturer's warranty on pre-terminated cables
- Retrofits, repairs and maintenance can be done much more easily and quickly
- Strain relief according to EN 62444
- Space saving shape
- Optimal for D-Sub connectors
- High stability, vibration resistant

### Specifications

Material	Polyamide (PA)
Flame class	UL94-Vo, self-extinguishing
IP rating	IP66, with gasket and correct selection of single grommets (certified acc. to EN 60529)
UL type rating	UL type 12 (acc. to UL 50E)
Temperature	- 40°C to + 140°C (static)
Properties	Halogen-free, silicone-free
Frame depth	17 mm

### Accessories

KT Cable grommets	48 - 52
KEL-EMC Cable collectors	148 - 150
ST Plugs	53