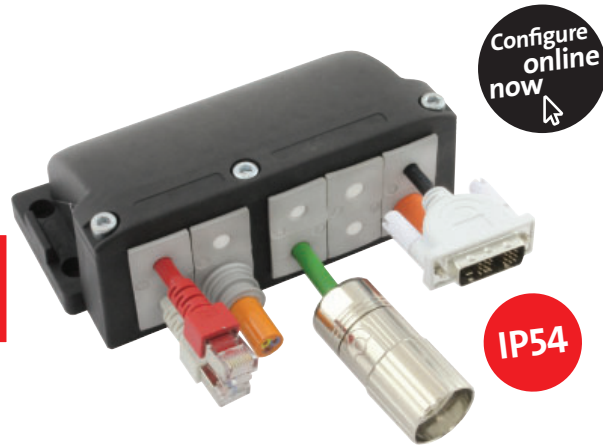
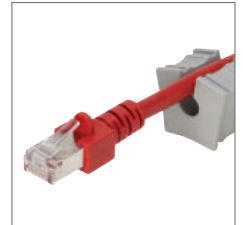


# KEL-FG-A

Flange enclosures for cable entry



V2A anti-corrosive  
Also available with stainless steel screws (V2A).



Split KT grommets

## Product description

The cable entry frames KEL-FG-A are suited for installation, sealing and strain relief of cables with connectors and conduits at an angle of 90° to the cabinet, enclosure or machine wall. The KEL-FG-A frame is the same size as a standard 24 pin industrial connector. All frame systems come with a rubber gasket.

## Advantages & benefits

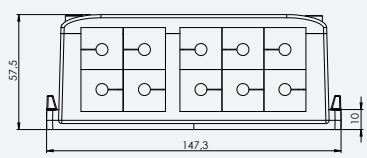
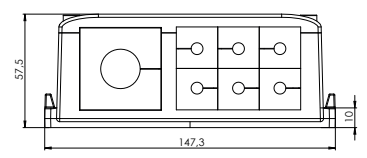
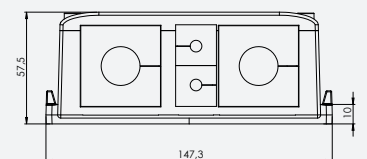
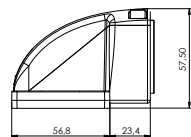
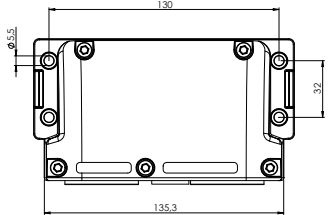
- Installation at an angle of 90° to the wall
- Mechanical protection of cable directly at the place of entry
- Protection against water spray and drips
- Maintain manufacturer's warranty on pre-terminated cables
- Strain relief according to EN 62444
- High stability, vibration resistant

## Specifications

Material	<b>Polyamide (PA)</b>
Flame class	<b>UL94-Vo, self-extinguishing</b>
IP rating	<b>IP54, with gasket and correct selection of the cable grommets</b>
Temperature	<b>- 40°C to + 140°C (static)</b>
Properties	<b>Halogen-free, silicone-free</b>
Cut-out dimensions	<b>36 × 112 mm, Page 220-221</b>

## Accessories

KT Cable grommets	48 - 52
AT Adapter grommets	54 - 57
KEL-SNAP Mounting frames	31
KEL-EMC Cable collectors	148 - 150
ST Plugs	53

Description	Type	Order No.	Grommets small   large	PU
	KEL-FG-A10	42320	10 -	1
	KEL-FG-A10 with V2A screws	42320.200	10 -	1
	KEL-FG-A7	42322	6 1	1
	KEL-FG-A7 with V2A screws	42322.200	6 1	1
	KEL-FG-A4	42324	2 2	1
	KEL-FG-A4 with V2A screws	42324.200	2 2	1
				
				



The cable entry frames enable the integration of the new IMAS-Connect™ adapter grommets.