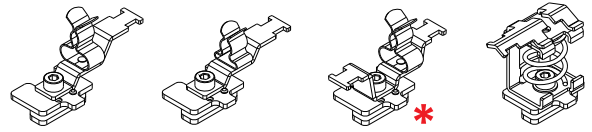
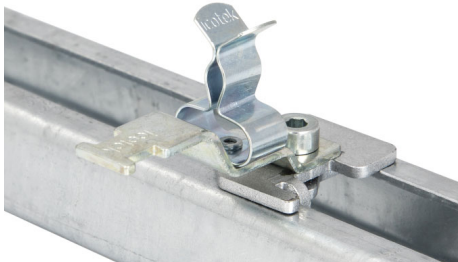


EMC shield clamps for 30 mm C-rails with strain relief function



		SC LFZ-M MSKL Fixing hole M4	SC LFZ SKL Fixing hole M4	SC LFZ2-M MSKL Fixing hole M4	SC SKZ
	Clamping range	Order No.	Order No.	Order No.	Order No.
MSKL	3 – 12 mm	37612.100	–	NEW 37612.150	–
	8 – 18 mm	37614.100	–	NEW 37614.150	–
SKL	1.5 – 3 mm	–	36910.100	–	–
	3 – 6 mm	–	36915.100	–	–
	6 – 8 mm	–	36920.100	–	–
	8 – 11 mm	–	36925.100	–	–
	11 – 17 mm	–	36930.100	–	–
	17 – 22 mm	–	36935.100	–	–
	22 – 30 mm	–	36940.100	–	–
	30 – 38 mm	–	36941.100	–	–
SKZ	3 – 8 mm	–	–	–	36696
	4 – 13.5 mm	–	–	–	36700
	PU	10	10	10	10

* with double strain relief function

Product description

Whenever a cable shielding is required with the possibility of grounding, EMC shield clamps can be used. Shield clamps are easy to use and effective in deriving conducted disturbances.

Optional strain relief function: the cable is fixed via the cable jacket using cable ties.

Assembly

The shield clamps can be mounted on 30 mm C-rails using the SC mounting foot (included in the shipment).

Advantages & benefits

- Integrated strain relief function
- Large cable shield contact area
- Easy, tool-free assembly
- The spring design requires no adjustments and will permanently maintain contact to the cable shield
- Designed for high density applications
- Shock and vibration resistant, maintenance free
- Double strain relief: acc. to PROFINET installation guidelines

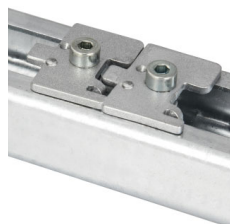
Specifications

Material

MSKL-clamp	
SKL-clamp	Spring steel, zinc plated
LFZ foot	Sheet steel, galvanically zinc plated Fixing hole M4
SC foot	Sheet steel, galvanically zinc plated
SK-bracket	Sheet steel, galvanically zinc plated



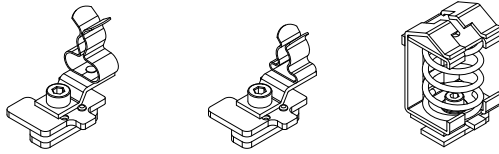
SC foot single for C-rail (PU: 10) Order No. 36220



SC-foot: space-saving design enables high cable density.

Mounting foot adjusts itself when tightening the screw.

EMC shield clamps for 30 mm C-rails without strain relief function



	SC LF MSKL Fixing hole M4	SC LF SKL Fixing hole M4	SC SK
	Order No.	Order No.	Order No.
MSKL	3 – 12 mm	37608.100	–
	8 – 18 mm	37610.100	–
SKL	1.5 – 3 mm	–	36251.100
	3 – 6 mm	–	36253.100
	6 – 8 mm	–	36255.100
	8 – 11 mm	–	36256.100
	11 – 17 mm	–	36257.100
	17 – 22 mm	–	36258.100
	22 – 30 mm	–	36259.100
SK	3 – 8 mm	–	36696.002
	4 – 13.5 mm	–	36700.002
	10 – 20 mm	–	36704
	15 – 32 mm	–	36708
PU	10	10	10

Product description

Whenever a cable shielding is required with the possibility of grounding, EMC shield clamps can be used. Shield clamps are easy to use and effective in derivating conducted disturbances.

Assembly

The shield clamps can be mounted on 30 mm C-rails using the SC mounting foot (included in the shipment).

Advantages & benefits

- Large cable shield contact area
- Easy, tool-free assembly
- The spring design requires no adjustments and will permanently maintain contact to the cable shield
- Designed for high density applications
- Shock and vibration resistant, maintenance free

Specifications

Material

MSKL-clamp,

SKL-clamp

LF foot

SC foot

SK-bracket

Spring steel, zinc plated

Sheet steel, galvanically zinc plated

Fixing hole M4

Sheet steel, galvanically zinc plated

Sheet steel, galvanically zinc plated

Difference between SKL | MSKL | SKZ clamping ranges

